

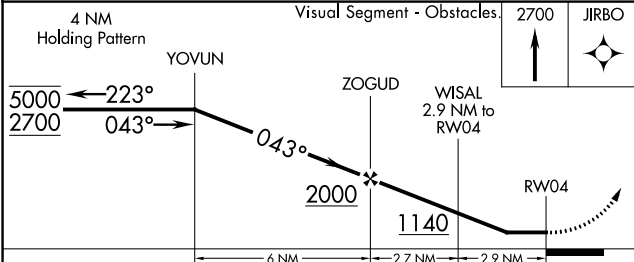
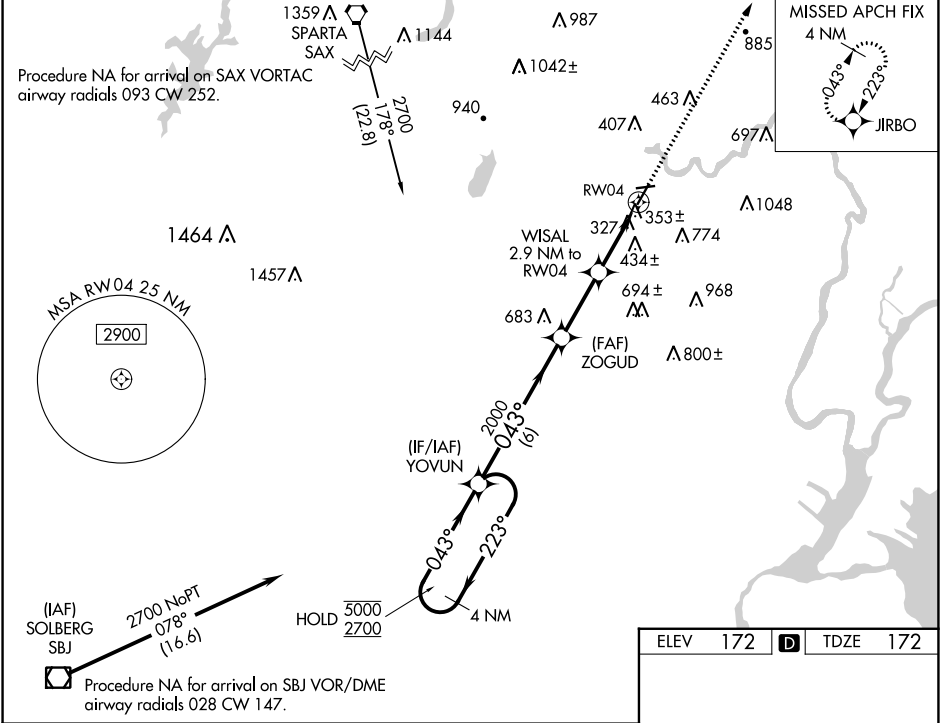
WAAS CH <b>42622</b> <b>W04A</b>	APP CRS <b>043°</b>	Rwy Idg TDZE Apt Elev	<b>3977</b> <b>172</b> <b>172</b>
--	------------------------	-----------------------------	---

# RNAV (GPS) RWY 4

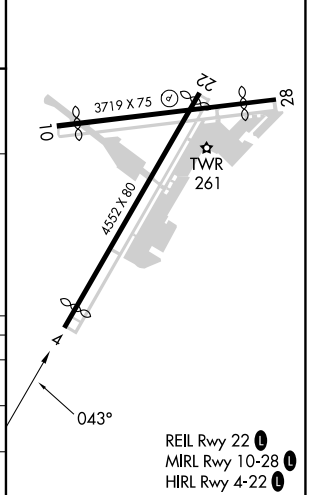
ESSEX COUNTY (CDW)

RNP APCH - GPS.		MISSED APPROACH: Climb to 2700 direct JIRBO and hold.			
Rwy 4 helicopter visibility reduction below 1 SM NA. Circling Rwy 10, 28 NA at night. Circling NA E of Rwy 4-22.					

ATIS <b>135.5</b>	NEWARK APP CON <b>127.6 379.9</b>	CALDWELL TOWER ★ <b>119.8 (CTAF) 0</b>	GND CON <b>121.9</b>	CLNC DEL <b>121.1</b>	UNICOM <b>122.95</b>
----------------------	--------------------------------------	---	-------------------------	--------------------------	-------------------------



ELEV 172	TDZE 172
----------	----------



CATEGORY	A	B	C	D
LP MDA	620-1	448 (500-1)	620-1 3/8	448 (500-1 3/8)
LNAV MDA	660-1	488 (500-1)	660-1 3/8	488 (500-1 3/8)
CIRCLING	960-1 788 (800-1)	1040-1 1/4 868 (900-1 1/4)	1100-2 3/4 928 (1000-2 3/4)	1400-3 1228 (1300-3)

- REIL Rwy 22
- MIRL Rwy 10-28
- HIRL Rwy 4-22

NE-2, 31 OCT 2024 to 28 NOV 2024

NE-2, 31 OCT 2024 to 28 NOV 2024