

VOR/DME DJB 113.6 Chan 83	APP CRS 125°	Rwy Idg TDZE Apt Elev	N/A N/A 758
---	------------------------	-----------------------------	--

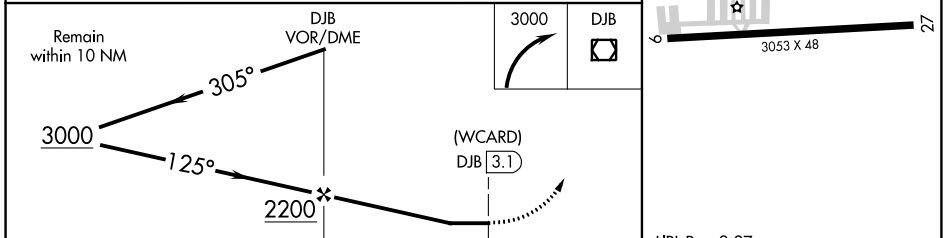
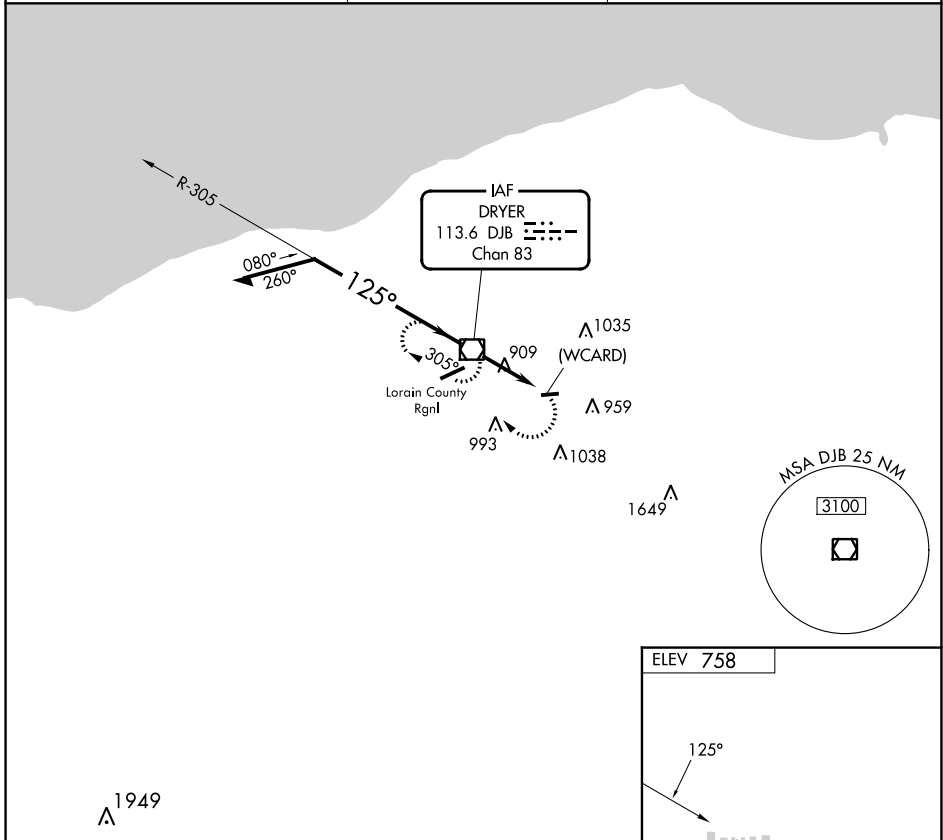
VOR or GPS-A

ELYRIA (1G1)

▼ Use Cleveland Hopkins Intl altimeter setting.
▲ NA Procedure NA at night.
 Helicopter visibility reduction below 1 SM NA.

MISSED APPROACH: Climbing right turn to 3000 direct DJB VOR/DME and hold.

CLEVELAND APP CON 125.35 346.325	CLNC DEL 125.7	UNICOM 122.8 (CTAF)
--	--------------------------	-------------------------------



CATEGORY	FAF to MAP 3.1 NM					
	A	B	C	D		
CIRCLING	1280-1 522 (600-1)	1320-1 562 (600-1)	1420-1¾ 662 (700-1¾)	NA		
	Knots	60	90	120	150	180
	Min:Sec	3:06	2:04	1:33	1:14	1:02