

(LIFRR2.LIFRR) 24137

AL-5349 (FAA)

MIAMI EXEC (TMB)
MIAMI, FLORIDA

LIFRR TWO DEPARTURE (RNAV)

**TOP ALTITUDE:
ASSIGNED BY ATC**

RNAV 1 - DME/DME/IRU or GPS.

RADAR required for non-GPS
equipped aircraft.

NOTE: Accelerate to 250K until leaving 10000,
if unable, advise ATC.

NOTE: Jet aircraft only.

NOTE: For aircraft filed at or below 12000.

TAKEOFF MINIMUMS

Rwy 9L: Standard with minimum climb of 500'
per NM to 1300.

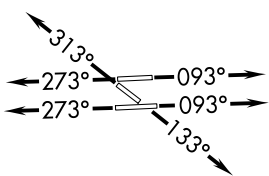
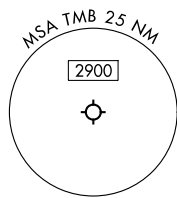
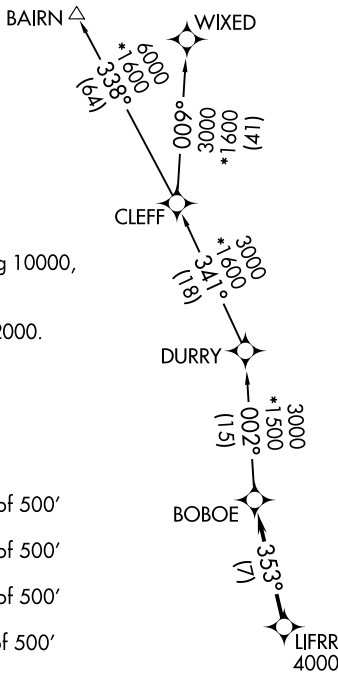
Rwy 9R: Standard with minimum climb of 500'
per NM to 1500.

Rwy 13: Standard with minimum climb of 500'
per NM to 1800.

Rwy 27L: Standard with minimum climb of 500'
per NM to 1900.

Rwy 27R: Standard with minimum climb of 500'
per NM to 1700.

Rwy 31: Standard with minimum climb of 500'
per NM to 1400.



MIAMI DEP CON 125.5 354.1
 ATIS 124.0
 CLNC DEL 133.0
 GND CON 121.7
 MIAMI EXEC TOWER* 118.9 (CTAF)

NOTE: Chart not to scale.

DEPARTURE ROUTE DESCRIPTION

TAKEOFF RUNWAYS 9L/R: Climb on heading 093° or as assigned by ATC, thence. . .

TAKEOFF RUNWAY 13: Climb on heading 133° or as assigned by ATC, thence. . .

TAKEOFF RUNWAYS 27L/R: Climb on heading 273° or as assigned by ATC, thence. . .

TAKEOFF RUNWAY 31: Climb on heading 313° or as assigned by ATC, thence. . .

. . .for RADAR vector to cross LIFRR at or above 4000, then on track 353° to BOBOE, then on assigned transition, maintain ATC assigned altitude, expect clearance to filed altitude within 10 minutes after departure.

BAIRN TRANSITION (LIFRR2.BAIRN)

WIXED TRANSITION (LIFRR2.WIXED)

LIFRR TWO DEPARTURE (RNAV)

(LIFRR2.LIFRR) 21MAR24

MIAMI, FLORIDA
MIAMI EXEC (TMB)

SE-3, 31 OCT 2024 to 28 NOV 2024

SE-3, 31 OCT 2024 to 28 NOV 2024