

MAYNR THREE DEPARTURE (RNAV)

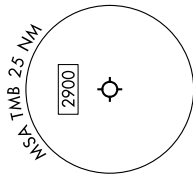
SE-3, 31 OCT 2024 to 28 NOV 2024

MIAMI DEP CON
125.5 354.1
ATIS
124.0
CLNC DEL
133.0
GND CON
121.7
MIAMI EXEC TOWER *
118.9 (CTAF)

MAYNR THREE DEPARTURE (RNAV)

TAKEOFF MINIMUMS
Rwy 9L: Standard with minimum climb of 500'/NM to 1300.
Rwy 9R: Standard with minimum climb of 500'/NM to 1500.
Rwy 13: Standard with minimum climb of 500'/NM to 1800.
Rwy 27L: Standard with minimum climb of 500'/NM to 1900.
Rwy 27R: Standard with minimum climb of 500'/NM to 1700.
Rwy 31: Standard with minimum climb of 500'/NM to 1400.

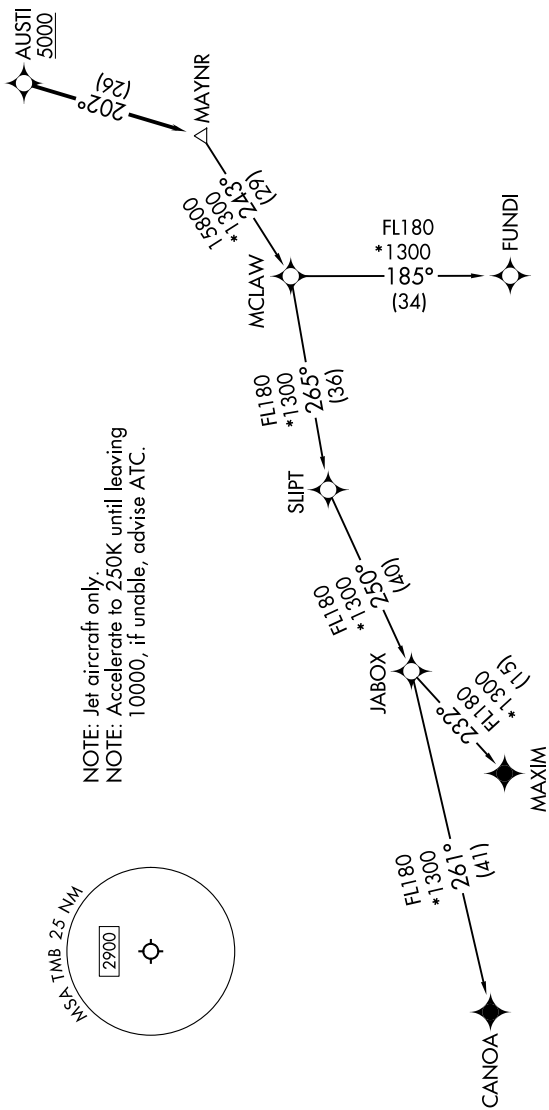
NOTE: Jet aircraft only.
NOTE: Accelerate to 250K until leaving
10000, if unable, advise ATC.



**TOP ALTITUDE:
ASSIGNED BY ATC**



RNAV 1 - DME/DME/IRU or GPS.
From SLIPT to MAXIM: RNAV 1 - GPS.
From SLIPT to CANOA: RNAV 1 - GPS.
RADAR required for non-GPS equipped aircraft.
RADAR required.



(CONTINUED ON FOLLOWING PAGE)

NOTE: Chart not to scale.