

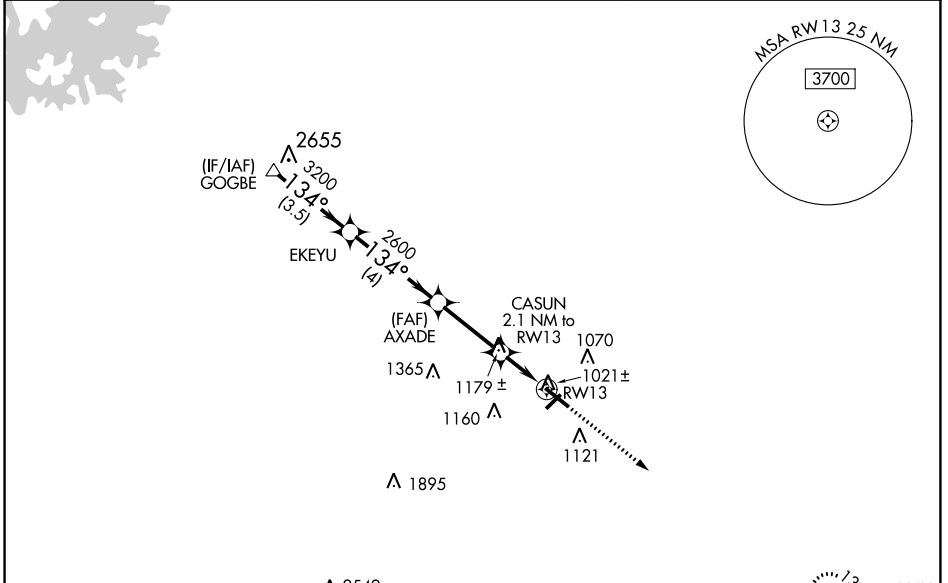
WAAS CH 90305 W13A	APP CRS 134°	Rwy Idg TDZE Apt Elev	5100 933 934
--	------------------------	-----------------------------	---

RNAV (GPS) RWY 13

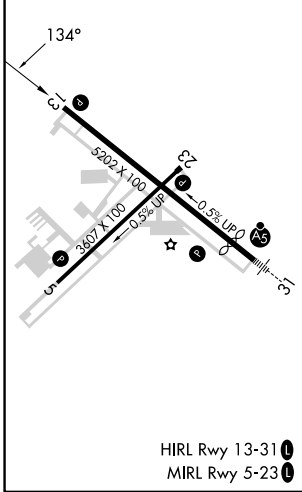
BARROW COUNTY (WDR)

RNP APCH.	MISSED APPROACH: Climb to 3000 direct CADEB and hold.
-----------	---

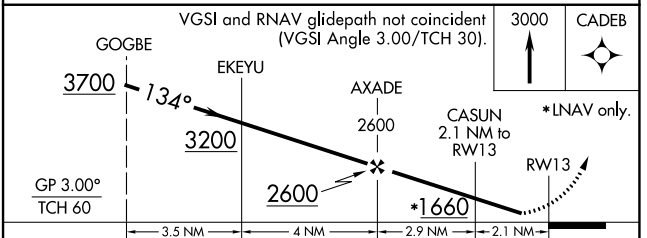
AWOS-3 118.575	ATLANTA APP CON ★ 132.475 291.1	UNICOM 123.0 (CTAF)
--------------------------	---	-------------------------------



ELEV 934	D	TDZE 933
----------	----------	----------



CADEB	4 NM
-------	------



CATEGORY	A	B	C	D
LPV DA		1207-1	274 (300-1)	
LNNAV/VNAV DA		1422-1 $\frac{3}{8}$	489 (500-1 $\frac{3}{8}$)	
LNNAV MDA		1300-1	367 (400-1)	
CIRCLING	1400-1	1580-1	1660-2	1660-2 $\frac{1}{4}$
	466 (500-1)	646 (700-1)	726 (800-2)	726 (800-2 $\frac{1}{4}$)

SE-4, 31 OCT 2024 to 28 NOV 2024

SE-4, 31 OCT 2024 to 28 NOV 2024