

WINDER, GEORGIA

AL-5360 (FAA)

24025

WAAS CH <b>82516</b> <b>W23A</b>	APP CRS <b>231°</b>	Rwy Idg TDZE Apt Elev	<b>3607</b> <b>929</b> <b>934</b>
--	------------------------	-----------------------------	---

# RNAV (GPS) RWY 23

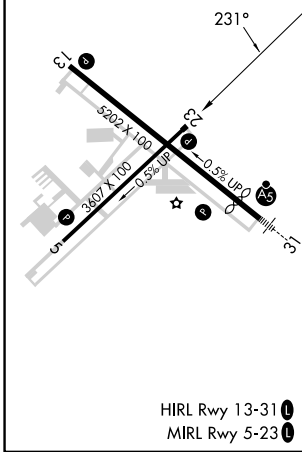
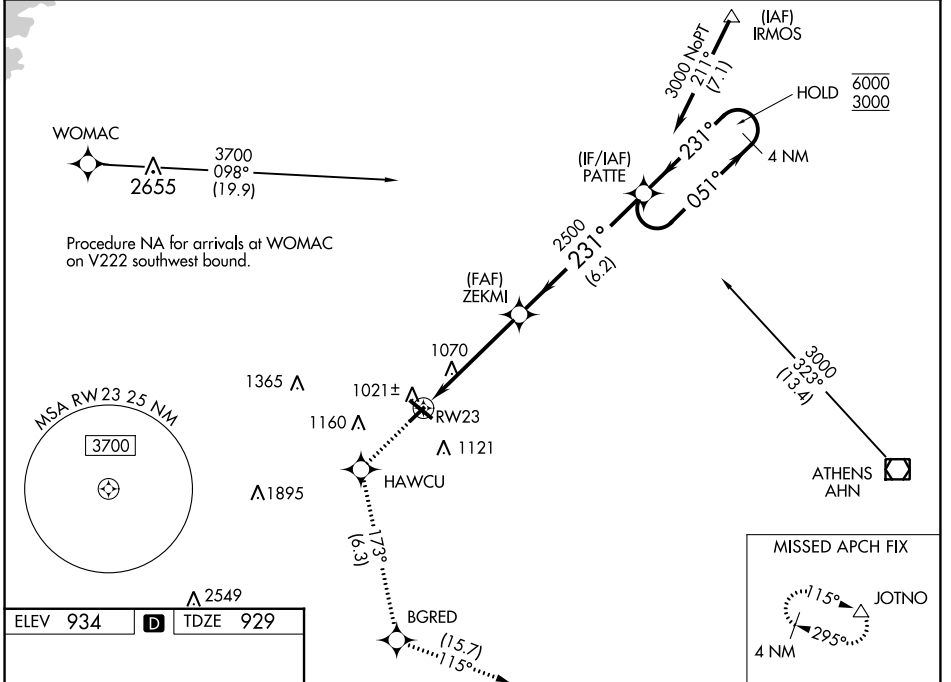
BARROW COUNTY (WDR)

RNP APCH.

▼ For uncompensated Baro-VNAV systems, LNAV/VNAV NA below -16°C or above 54°C. Straight-in Rwy 23 NA at night, Circling Rwy 13, 23 NA at night. Rwy 23 helicopter visibility reduction below 1 SM NA.

MISSED APPROACH: Climb to 3000 direct HAWCU and on track 173° to BGRED and on track 115° to JOTNO and hold.

AWOS-3 <b>118.575</b>	ATLANTA APP CON ★ <b>132.475 291.1</b>	UNICOM <b>123.0 (CTAF)</b>
--------------------------	---	-------------------------------



CATEGORY	A	B	C	D
LPV DA		1179-1	250 (300-1)	
LNAV/VNAV DA		1274-1	345 (400-1)	
LNAV MDA	1320-1	391 (400-1)	1320-1½	391 (400-1½)
CIRCLING	1400-1 466 (500-1)	1580-1 646 (700-1)	1660-2 726 (800-2)	1660-2¼ 726 (800-2¼)

SE-4, 31 OCT 2024 to 28 NOV 2024

SE-4, 31 OCT 2024 to 28 NOV 2024

WINDER, GEORGIA  
Orig-D 20MAY21

33°59'N-83°40'W

BARROW COUNTY (WDR)  
**RNAV (GPS) RWY 23**