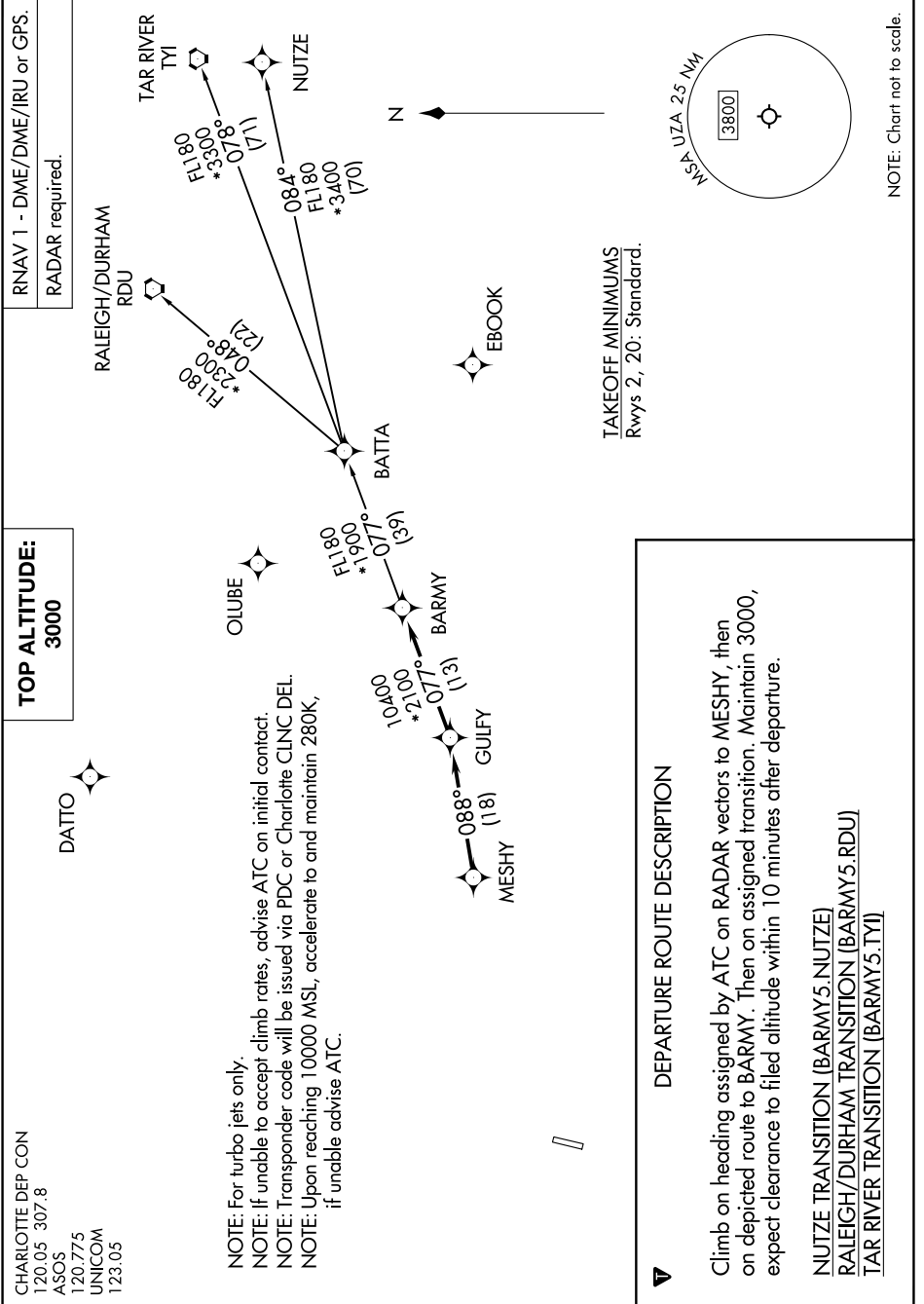


# BARMY FIVE DEPARTURE (RNAV)

SE-2, 31 OCT 2024 to 28 NOV 2024



CHARLOTTE DEP CON  
120.05 307.8  
ASOS  
120.775  
UNICOM  
123.05

**TOP ALTITUDE:**  
3000

RNAV 1 - DME/DME/IRU or GPS.  
RADAR required.

NOTE: For turbo jets only.  
NOTE: If unable to accept climb rates, advise ATC on initial contact.  
NOTE: Transponder code will be issued via PDC or Charlotte CLNC DEL.  
NOTE: Upon reaching 10000 MSL, accelerate to and maintain 280K, if unable advise ATC.

**DEPARTURE ROUTE DESCRIPTION**

Climb on heading assigned by ATC on RADAR vectors to MESHY, then on depicted route to BARMY. Then on assigned transition. Maintain 3000, expect clearance to filed altitude within 10 minutes after departure.

NUTZE TRANSITION (BARMY5.NUTZE)  
RALEIGH/DURHAM TRANSITION (BARMY5.RDU)  
TAR RIVER TRANSITION (BARMY5.TYI)

NOTE: Chart not to scale.

SE-2, 31 OCT 2024 to 28 NOV 2024