


LOC/DME I- UZA	APP CRS	Rwy Idg	5500
108.5	016°	TDZE	666
Chan 22		Apt Elev	666

ILS Z or LOC Z RWY 2

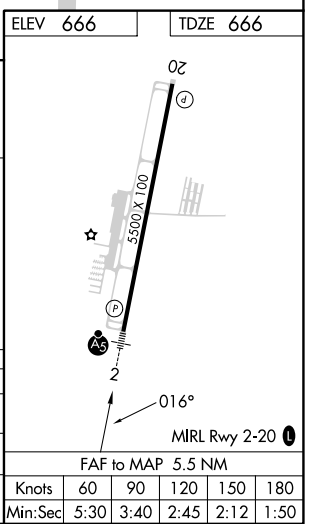
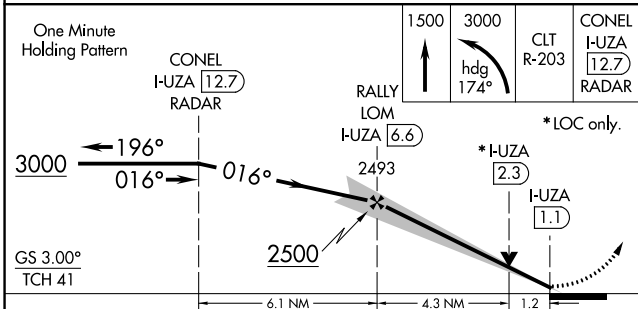
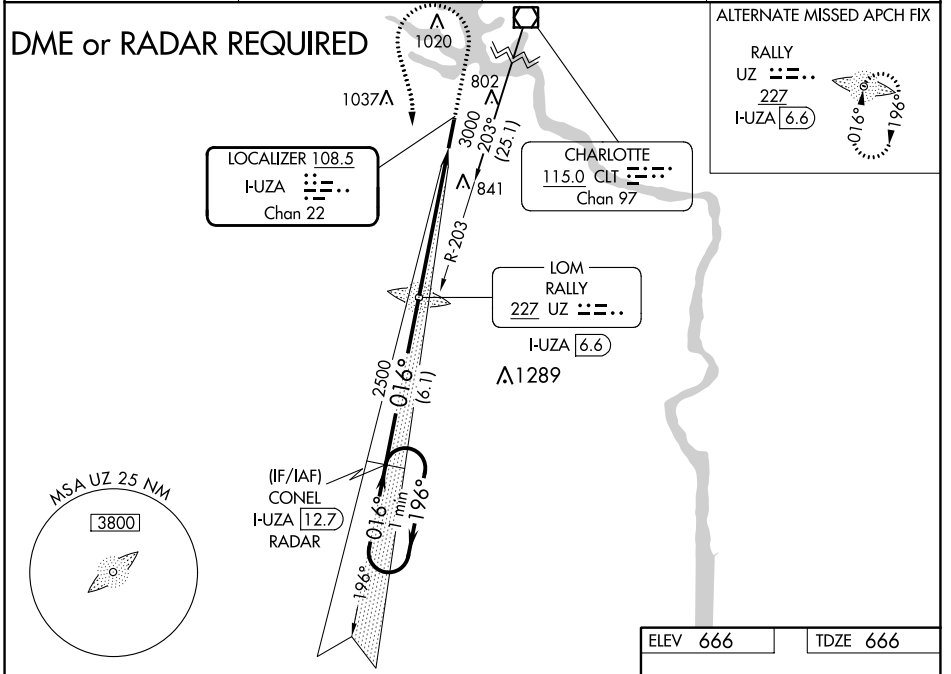
ROCK HILL/YORK COUNTY/BRYANT FLD (UZA)


NA ADF or DME required. VDP NA with Charlotte/Douglas Intl altimeter setting. When local altimeter setting not received, use Charlotte/Douglas Intl altimeter setting and increase all DA 45 feet and all MDA 60 feet. Increase S-LOC 2 Cat C/D visibility 1/4 mile. For inop MALSRL, increase S-LOC 2 Cat C/D visibility to 1 1/8 mile. For inop MALSRL, when using Charlotte/Douglas Intl altimeter setting, increase S-LOC 2 Cat C/D visibility to 1 1/8 mile.

MALSRL 

MISSED APPROACH: Climb to 1500 then climbing left turn to 3000 on heading 174° and CLT VOR/DME R-203 to CONEL/I-**UZA** 12.7 DME/RADAR and hold.

ASOS 120.775	CHARLOTTE APP CON 120.05 307.8	GCO 121.725	UNICOM 123.05 (CTAF) 
------------------------	--	-----------------------	--



CATEGORY	A	B	C	D
S-ILS 2		866-1/2	200 (200-1/2)	
S-LOC 2	1080-1/2	414 (500-1/2)	1080-3/4	414 (500-3/4)
 CIRCLING	1140-1 474 (500-1)	1160-1 494 (500-1)	1340-2 674 (700-2)	1340-2 1/4 674 (700-2 1/4)

SE-2, 31 OCT 2024 to 28 NOV 2024

SE-2, 31 OCT 2024 to 28 NOV 2024