

# JOJO FIVE DEPARTURE (RNAV)

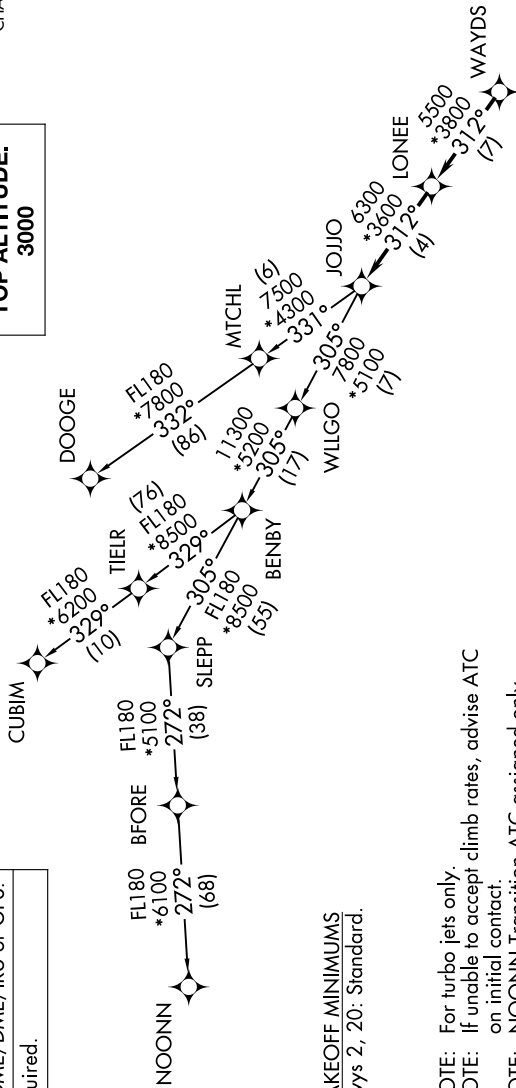
ROCK HILL/YORK COUNTY/BRYANT FLD (UZA)  
AL-5361 (FAA) ROCK HILL, SOUTH CAROLINA

CHARLOTTE DEP CON  
120.05 307.8  
ASOS  
120.775  
UNICOM (CTAF)  
123.05

**TOP ALTITUDE:  
3000**

SE-2, 31 OCT 2024 to 28 NOV 2024

RNAV 1 - DME/DME/IRU or GPS.  
RADAR required.



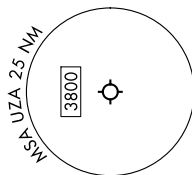
**TAKEOFF MINIMUMS**  
Rwys 2, 20: Standard.

- NOTE: For turbo jets only.
- NOTE: If unable to accept climb rates, advise ATC on initial contact.
- NOTE: NOONN Transition ATC assigned only.
- NOTE: Upon reaching 10000 MSL, accelerate to and maintain 280K, if unable advise ATC.

### DEPARTURE ROUTE DESCRIPTION

Climb on heading assigned by ATC, on RADAR vectors to WAYDS, then on depicted route to JOJO. Then on assigned transition. Maintain 3000, expect filed altitude within 10 minutes after departure.

- CUBIM TRANSITION (JOJO5.CUBIM)
- DOOGE TRANSITION (JOJO5.DOOGE)
- NOONN TRANSITION (JOJO5.NOONN)



NOTE: Chart not to scale.

# JOJO FIVE DEPARTURE (RNAV)

SE-2, 31 OCT 2024 to 28 NOV 2024