

WAAS CH <b>90325</b> <b>W20A</b>	APP CRS <b>196°</b>	Rwy Idg TDZE Apt Elev	<b>5500</b> <b>662</b> <b>666</b>
--	------------------------	-----------------------------	---

# RNAV (GPS) RWY 20

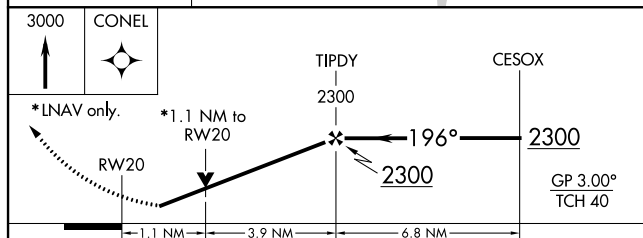
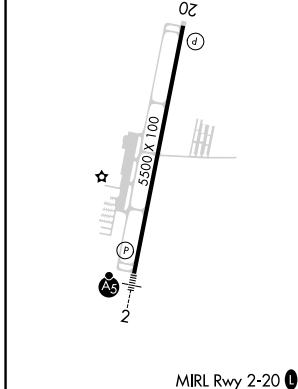
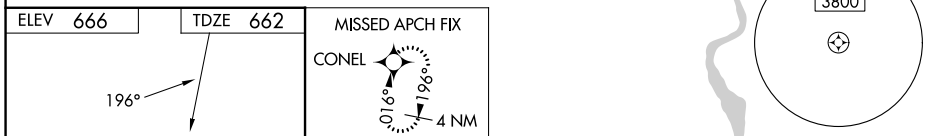
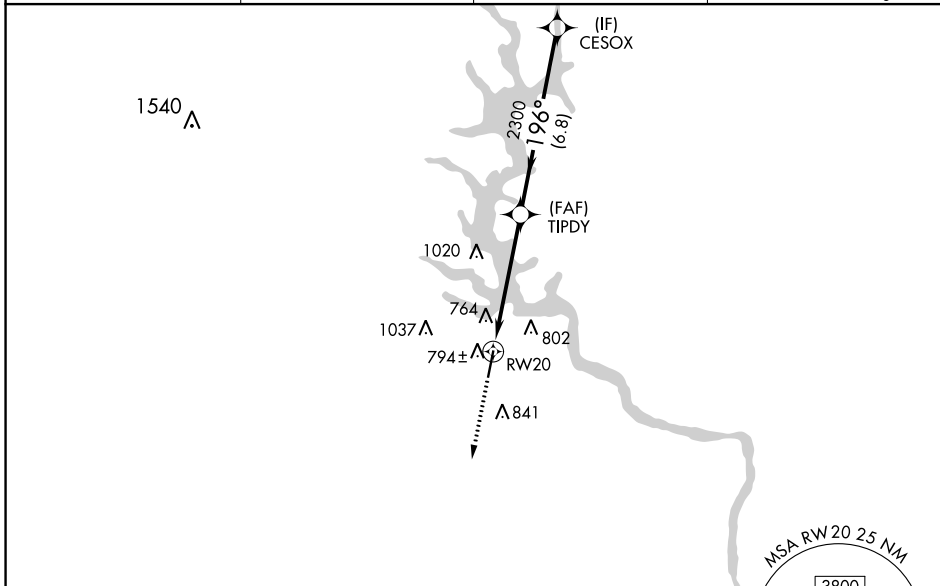
ROCK HILL/YORK COUNTY/BRYANT FLD (UZA)

**RNP APCH-GPS.**

**⚠** For uncompensated Baro-VNAV systems, procedure NA below -16°C or above 39°C.  
**⚠** When local altimeter setting not received, use Charlotte/Douglas Intl altimeter setting and increase LPV DA to 957 feet, LNAV/VNAV DA to 1084 feet, and all MDAs 60 feet; increase LPV visibility all Cats 1/8 SM, LNAV/VNAV visibility all Cats 1/4 SM, and LNAV visibility Cat C/D 1/4 SM. VDP and Baro-VNAV NA when using Charlotte/Douglas Intl altimeter setting. Rwy 20 helicopter visibility reduction below 3/4 SM NA.

**MISSED APPROACH:** Climb to 3000 direct CONEL and hold.

ASOS <b>120.775</b>	CHARLOTTE APP CON <b>120.05 307.8</b>	GCO <b>121.725</b>	UNICOM <b>123.05 (CTAF) 0</b>
------------------------	--	-----------------------	----------------------------------



CATEGORY	A	B	C	D
LPV DA		912-3/4	250 (300-3/4)	
LNAV/VNAV DA		1039-1	377 (400-1)	
LNAV MDA	1060-1	398 (400-1)	1060-1/8	398 (400-1/8)
CIRCLING	1140-1 474 (500-1)	1160-1 494 (500-1)	1340-2 674 (700-2)	1340-2 1/4 674 (700-2 1/4)

SE-2, 31 OCT 2024 to 28 NOV 2024

SE-2, 31 OCT 2024 to 28 NOV 2024