

ZAAPA FIVE DEPARTURE (RNAV)

EC-2, 31 OCT 2024 to 28 NOV 2024

TOP ALTITUDE: ASSIGNED BY ATC

ATIS 125.25
 CLNC DEL 339.8
 121.9 (when tower closed)
 GND CON 121.9 339.8
 LAKEFRONT TOWER ★ 124.3 (CTAF) 339.8
 CLEVELAND DEP CON 125.35 346.325

TAKEOFF MINIMUMS:

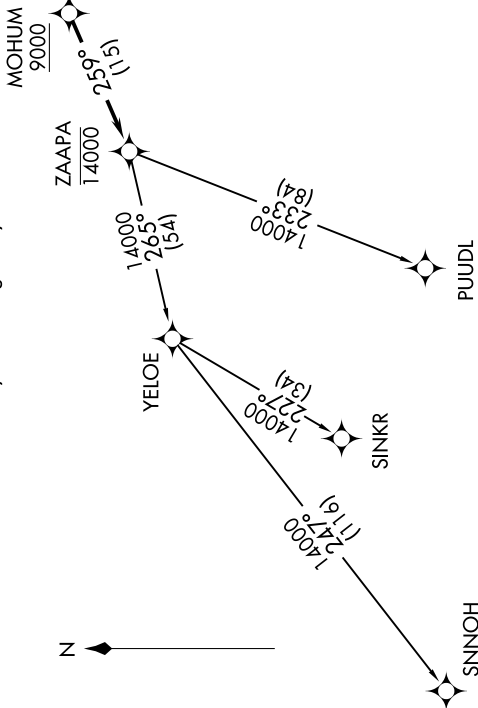
Rwy 6L/R, 24R: Standard with a minimum climb of 500' per NM to 1100.
 Rwy 24L: 400-1 $\frac{3}{4}$ ' or standard with minimum climb of 757' per NM to 1000.

NOTE: RADAR required.

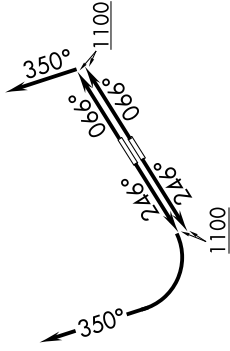
NOTE: RNAV 1.

NOTE: DME/DME/IRU or GPS required.

NOTE: PUIJDL TRANSITION: For aircraft at or below FL220 only or as assigned by ATC.



NOTE: Chart not to scale.



▼ DEPARTURE ROUTE DESCRIPTION

TAKEOFF RUNWAY 6L/R: Climb on heading 066° to 1100, then on heading 350° or as assigned by ATC, maintain 2000 (do not climb above 2000) for RADAR vectors to cross MOHUM at or above 9000, thence....

TAKEOFF RUNWAY 24L/R: Climb on heading 246° to 1100, then right turn heading 350° or as assigned by ATC, maintain 2000 (do not climb above 2000) for RADAR vectors to cross MOHUM at or above 9000, thence....

....on track 259° to cross ZAAPA at or below 14000, then on (transition). Maintain ATC assigned altitude, expect filed altitude ten minutes after departure.

PUIJDL TRANSITION (ZAAPA5.PUIJDL)

SINKR TRANSITION (ZAAPA5.SINKR)

SNNOH TRANSITION (ZAAPA5.SNNOH)

EC-2, 31 OCT 2024 to 28 NOV 2024