

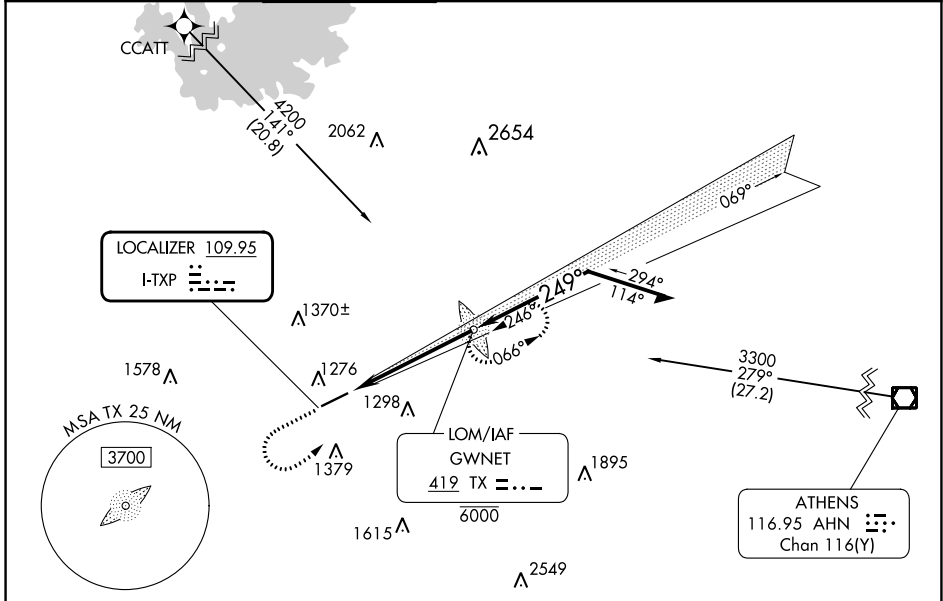
LOC I-TXP 109.95	APP CRS 249°	Rwy Idg TDZE Apt Elev 6001 1039 1062
----------------------------	------------------------	--

ILS or LOC RWY 25

GWINNETT COUNTY/BRISCOE FLD (LZU)

From CCATT: RNAV 1-GPS required.		MALSR	MISSED APPROACH: Climb to 2400 then climbing left turn to 3100 direct GWINNET LOM and hold.
ADF required.			
<p>⚠ Autopilot coupled approach NA below 1700. Inop table does not apply to S-ILS 25.</p>			

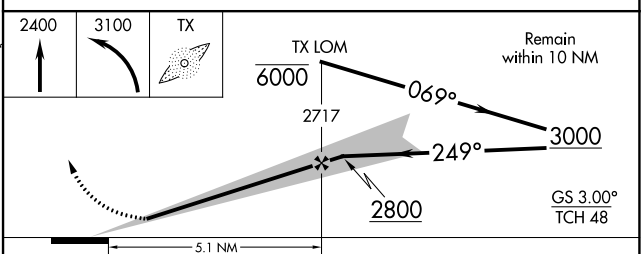
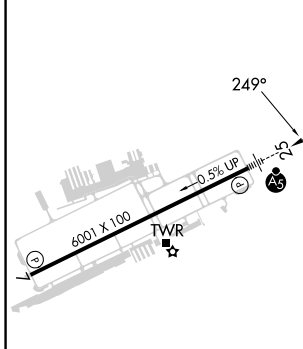
ATIS 132.275	ATLANTA APP CON 126.975 239.275	GWINNETT TOWER * 124.1 (CTAF) Ⓛ	GND CON 121.8	CLNC DEL 121.8	CLNC DEL 134.0 (When twr closed)	UNICOM 123.05
------------------------	---	---	-------------------------	--------------------------	---	-------------------------



SE-4, 31 OCT 2024 to 28 NOV 2024

SE-4, 31 OCT 2024 to 28 NOV 2024

ELEV 1062	TDZE 1039
-----------	-----------



CATEGORY	A	B	C	D
S-ILS 25		1239-3/4	200 (200-3/4)	
S-LOC 25	1500-3/4	461 (500-3/4)	1500-1	461 (500-1)
<input checked="" type="checkbox"/> CIRCLING	1640-1	578 (600-1)	1680-1 1/4 618 (700-1 1/4)	1700-2 638 (700-2)