

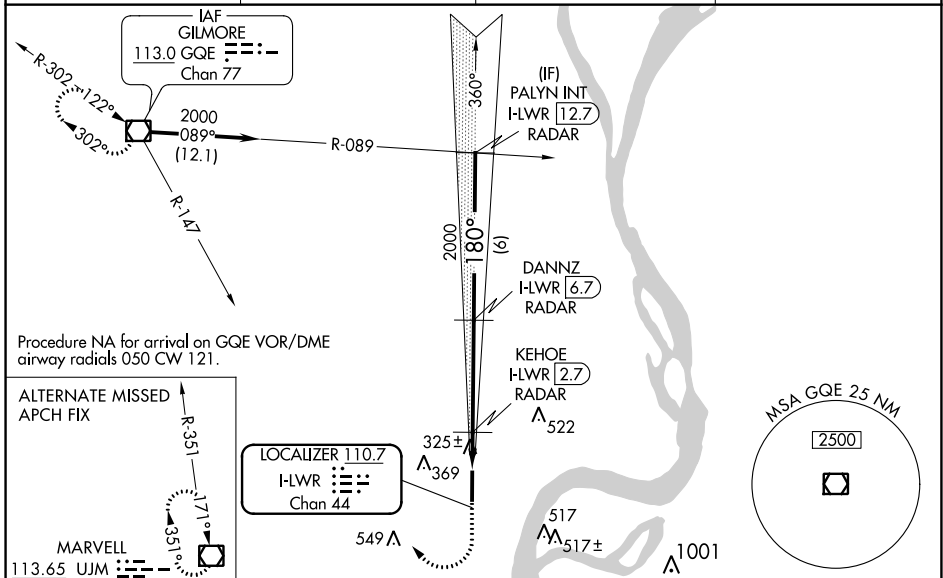
LOC/DME I-LWR <b>110.7</b> Chan <b>44</b>	APP CRS <b>180°</b>	Rwy Idg <b>6003</b> TDZE <b>213</b> Apt Elev <b>213</b>
---	------------------------	---

# ILS or LOC RWY 17

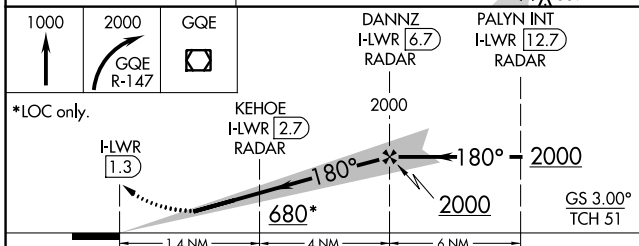
WEST MEMPHIS MUNI (A W M)

DME or RADAR required.	MALSR
<p><b>NA</b> For inop ALS, increase S-LOC 17 Cat C/D visibility to 1½ SM and KEHOE FIX MINIMUMS S-LOC 17 Cats C/D visibility to 1 SM.</p>	<p>MISSED APPROACH: Climb to 1000 then climbing right turn to 2000 on GQE VOR/DME R-147 to GQE VOR/DME and hold.</p>

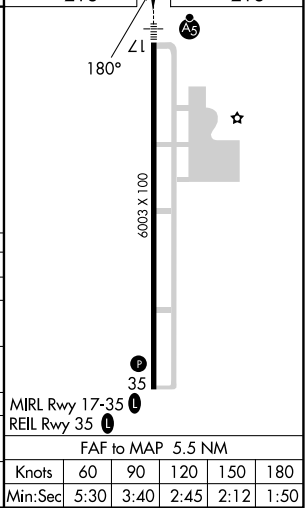
ASOS <b>118.175</b>	MEMPHIS APP CON <b>119.1 291.6</b>	CLNC DEL <b>121.7</b>	UNICOM <b>123.05</b> (CTAF) <b>1</b>
------------------------	---------------------------------------	--------------------------	---



ELEV 213	TDZE 213
----------	----------



CATEGORY	A	B	C	D
S-ILS 17	413-½ 200 (200-½)			
S-LOC 17	680-½ 467 (500-½)		680-1 467 (500-1)	
CIRCLING	680-1 467 (500-1)	740-1 527 (600-1)	800-1½ 587 (600-1½)	920-2¼ 707 (800-2¼)
KEHOE FIX MINIMUMS				
S-LOC 17	580-½ 367 (400-½)		580-5/8 367 (400-5/8)	
CIRCLING	640-1 427 (500-1)	740-1 527 (600-1)	800-1½ 587 (600-1½)	920-2¼ 707 (800-2¼)



MIRL Rwy 17-35 <b>1</b>	
REIL Rwy 35 <b>1</b>	
FAF to MAP 5.5 NM	
Knots	60 90 120 150 180
Min:Sec	5:30 3:40 2:45 2:12 1:50

SC-1, 31 OCT 2024 to 28 NOV 2024

SC-1, 31 OCT 2024 to 28 NOV 2024