

| | | | |
|--|------------------------|-----------------------------|---|
| WAAS CH 53339 W28A | APP CRS 277° | Rwy Idg TDZE Apt Elev | 3807 350 355 |
|--|------------------------|-----------------------------|---|

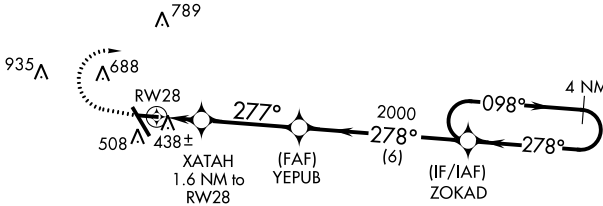
RNAV (GPS) RWY 28

HENRY TIFT MYERS (TMA)

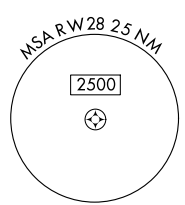
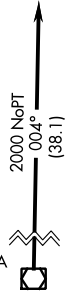
⚠ For uncompensated Baro-VNAV systems, LNAV/VNAV NA below -1.5°C (5°F) or above 54°C (130°F). Baro-VNAV and VDP NA when using Moultrie altimeter setting. DME/DME RNP-0.3 NA. When local altimeter setting not received, use Moultrie altimeter setting; increase LPV DA to 673 feet and LNAV/VNAV DA to 689 feet and all MDA 80 feet; increase LPV all Cats and LNAV/VNAV all Cats visibility 1/8 mile, LNAV Cat C/D visibility 1/4 mile, and increase Circling Cat C visibility 1/4 mile. Straight-in minimums NA at night. Circling Rwy 10 NA at night. Helicopter visibility reduction below 3/4 SM NA.

MISSED APPROACH: Climb to 800 then climbing right turn to 2000 direct ZOKAD and hold.

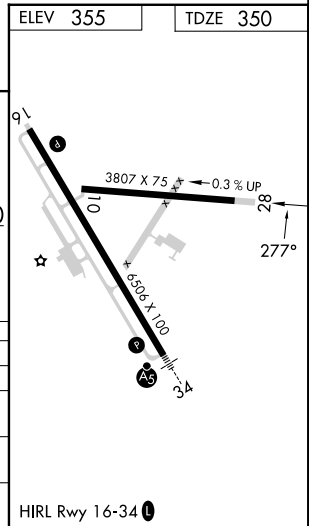
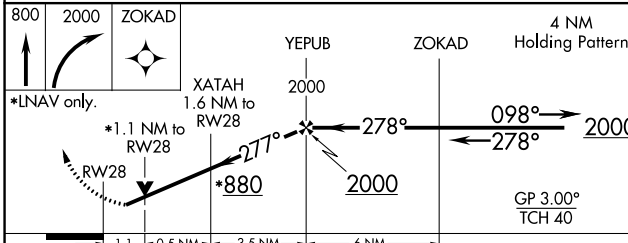
| | | |
|----------------------------|--|---------------------------------|
| AWOS-3PT 118.525 | VALDOSTA APP CON ★ 126.6 285.6 | UNICOM 122.7 (CTAF) 0 |
|----------------------------|--|---------------------------------|



Procedure NA for arrivals at OTK VOR/DME on V579 southbound.



| | |
|----------|----------|
| ELEV 355 | TDZE 350 |
|----------|----------|



| CATEGORY | A | B | C | D |
|-------------------|----------------------|-----------------------|-----------------------|-----------------------|
| LPV DA | | 604-1 | 254 (300-1) | |
| LNAV/VNAV DA | | 628-1 | 278 (300-1) | |
| LNAV MDA | | 720-1 | 370 (400-1) | |
| C CIRCLING | 920-1 565 (600-1) | 1060-1 705 (800-1) | 1060-2 705 (800-2) | 1240-3 885 (900-3) |

HIRL Rwy 16-34 0

SE-4, 31 OCT 2024 to 28 NOV 2024

SE-4, 31 OCT 2024 to 28 NOV 2024