

LOC/DME I-BPK <b>111.95</b> Chan 56(Y)	APP CRS <b>049°</b>	Rwy Idg <b>5000</b> TDZE <b>928</b> Apt Elev <b>928</b>
----------------------------------------------	------------------------	---------------------------------------------------------------

# ILS or LOC RWY 5

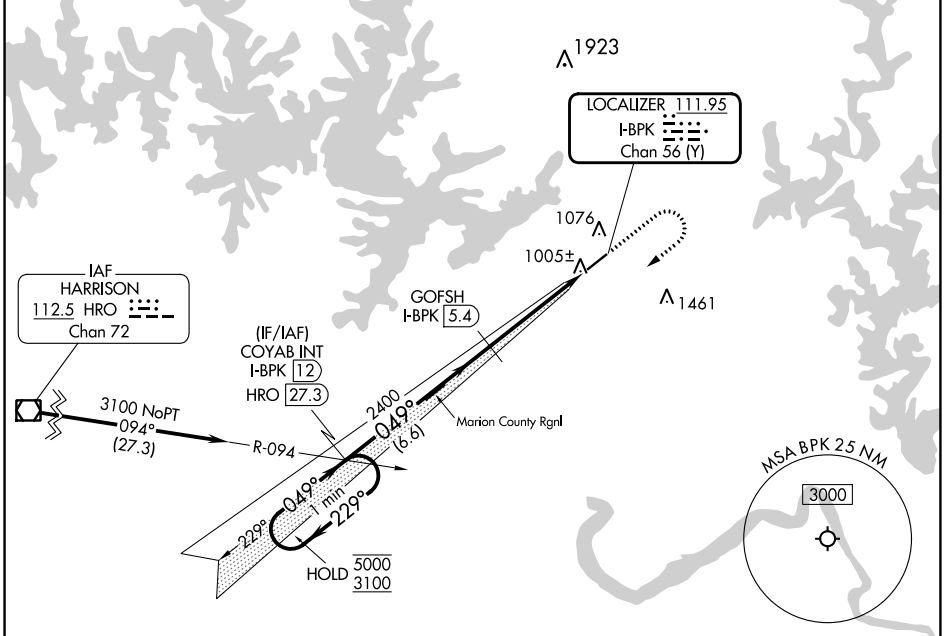
BAXTER COUNTY (BPK)

DME required for LOC only.

⚠ Circling NA for Cat C, southeast of Rwy 5-23. Procedure NA at night.  
 ⚠ Rwy 5 helicopter visibility reduction below 1 SM NA.

MISSED APPROACH: Climb to 2000, then climbing right turn to 3100 on heading 230° and HRO R-094 to COYAB INT/I-BPK 12 DME and hold.

ASOS <b>133.975</b>	MEMPHIS CENTER <b>126.85 281.55</b>	UNICOM <b>123.0 (CTAF) 0</b>
------------------------	----------------------------------------	---------------------------------



SC-1, 31 OCT 2024 to 28 NOV 2024

SC-1, 31 OCT 2024 to 28 NOV 2024

ELEV 928		TDZE 928	
VGSI and ILS glidepath not coincident (VGSI Angle 3.00/TCH 38). One Minute Holding Pattern COYAB INT I-BPK 12 HRO 27.3 GOFSH I-BPK 5.4 I-BPK 0.9 hdg 230° GS 3.00° TCH 44 5000 ← 229° → 3100 049° 2400 2400 6.6 NM 4.5 NM			
CATEGORY	A	B	D
S-ILS 5	1178-1 250 (300-1)		NA
S-LOC 5	1260-1 332 (400-1)		NA
CIRCLING	1400-1 472 (500-1)		1460-1½ 532 (600-1½)