

LOC/DME I-SIT	APP CRS	Rwy Idg	6500
108.9	116°	TDZE	24
Chan 26		Apt Elev	27

LDA RWY 11

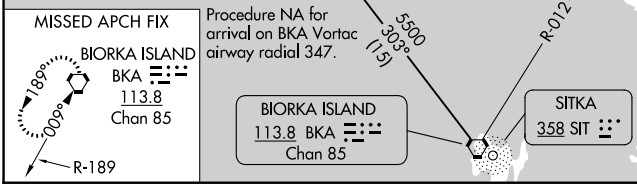
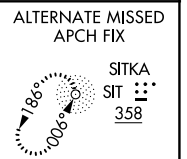
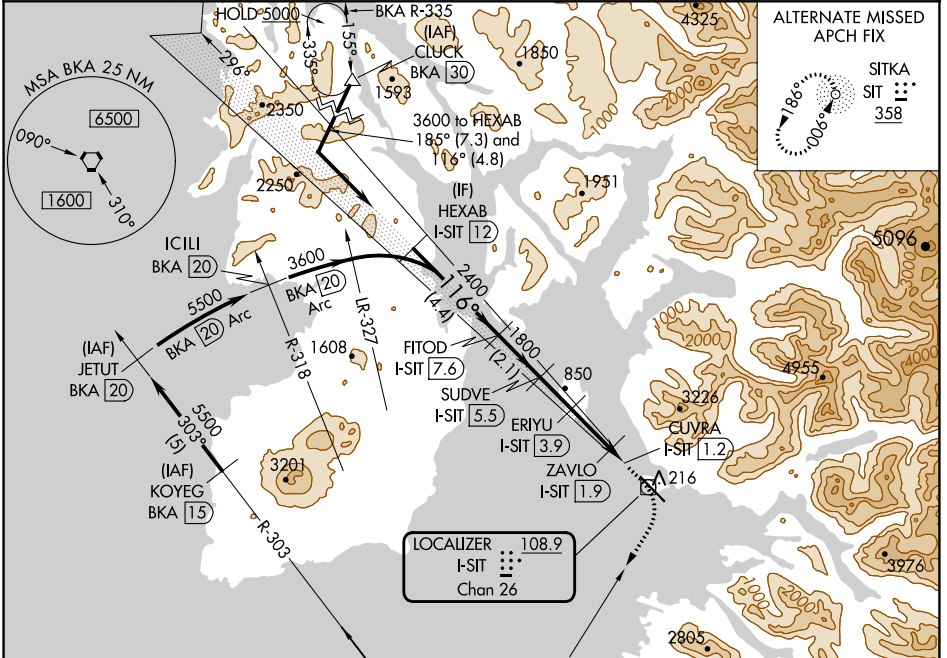
SITKA ROCKY GUTIERREZ (SIT)(PASI)

DME required.

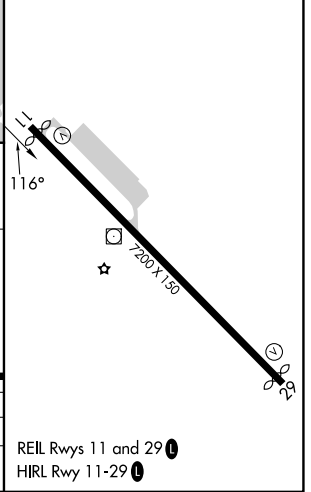
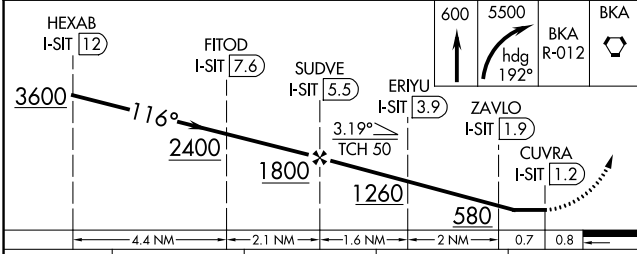
⚠ Circling NA northeast of Rwy 11-29.
⚠ When local altimeter setting not received, procedure NA.

MISSED APPROACH: Climb to 600 then climbing right turn to 5500 on heading 192° and BKA VORTAC R-012 to BKA VORTAC and hold, continue climb-in-hold to 5500.

AFIS	ANCHORAGE CENTER	SITKA RADIO	UNICOM
135.9	126.1 335.5	123.6 (CTAF) 0 122.2	122.95



ELEV 27	TDZE 24
---------	---------



CATEGORY	A	B	C	D
S-11	520-1 496 (500-1)		520-1 3/8 496 (500-1 3/8)	
CIRCLING	520-1 493 (500-1)		540-1 1/2 513 (600-1 1/2)	1500-3 1473 (1500-3)

AK, 31 OCT 2024 to 26 DEC 2024

AK, 31 OCT 2024 to 26 DEC 2024