

WAAS CH 56632	APP CRS 115°	Rwy Idg TDZE Apt Elev	6500 24 27
-------------------------	------------------------	-----------------------------	---------------------------------------

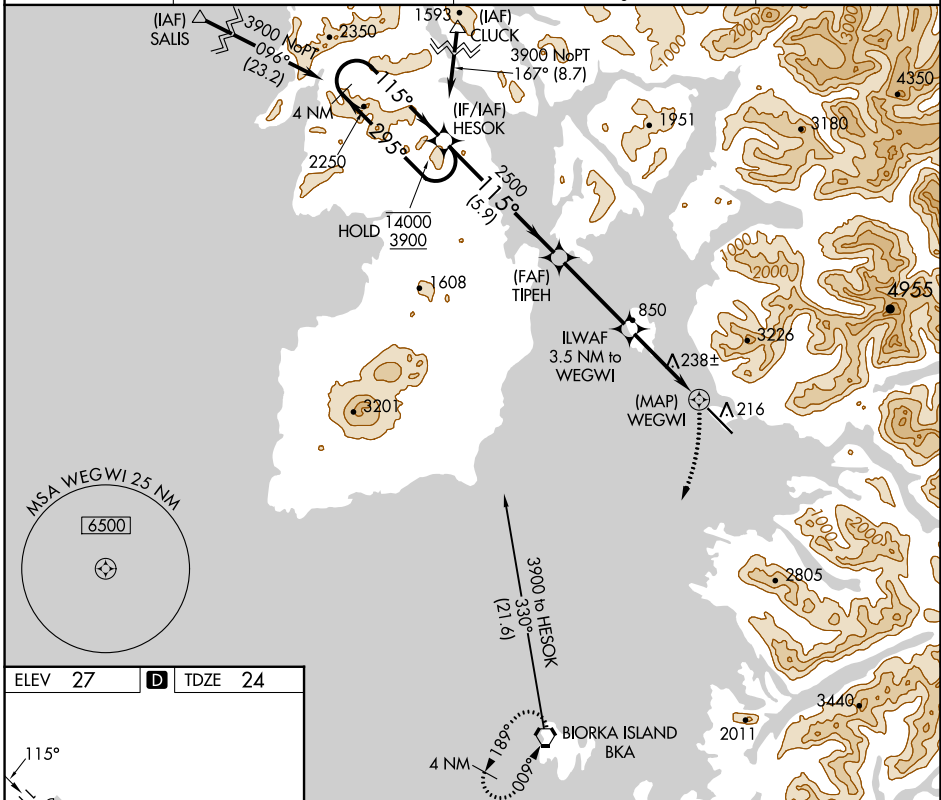
RNAV (GPS) RWY 11

SITKA ROCKY GUTIERREZ (SIT)(PASI)

RNP APCH.
 ▼ When local altimeter setting not received, procedure NA.
 ▲ Circling NA northeast of Rwy 11-29.

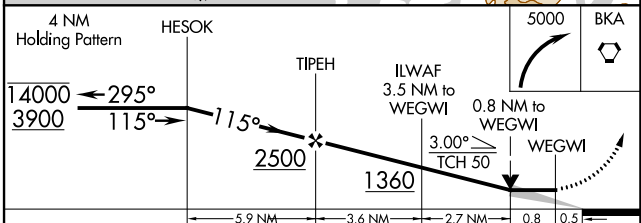
MISSED APPROACH: Climbing right turn to 5000 direct BKA VORTAC and hold, continue climb-in-hold to 5000.

AFIS 135.9	ANCHORAGE CENTER 126.1 335.5	SITKA RADIO 123.6 (CTAF) 122.2	UNICOM 122.95
----------------------	--	--	-------------------------



ELEV 27 **D** **TDZE 24**

REIL Rws 11 and 29
 HIRL Rwy 11-29



CATEGORY	A	B	C	D
LP MDA	500-1	476 (500-1)	500-1 $\frac{3}{8}$	476 (500-1 $\frac{1}{8}$)
LNAV MDA	1300-1 $\frac{1}{4}$ 1276 (1300-1 $\frac{1}{4}$)	1300-1 $\frac{1}{2}$ 1276 (1300-1 $\frac{1}{2}$)	1300-3	1276 (1300-3)
C CIRCLING	1300-1 $\frac{1}{4}$ 1273 (1300-1 $\frac{1}{4}$)	1300-1 $\frac{1}{2}$ 1273 (1300-1 $\frac{1}{2}$)	1300-3 1273 (1300-3)	1660-3 1633 (1700-3)

AK, 31 OCT 2024 to 26 DEC 2024

AK, 31 OCT 2024 to 26 DEC 2024