

VORTAC HYS <b>110.4</b> Chan 41	APP CRS <b>332°</b>	Rwy Idg TDZE Apt Elev	<b>6501</b> <b>1994</b> <b>1999</b>
---------------------------------------	------------------------	-----------------------------	---

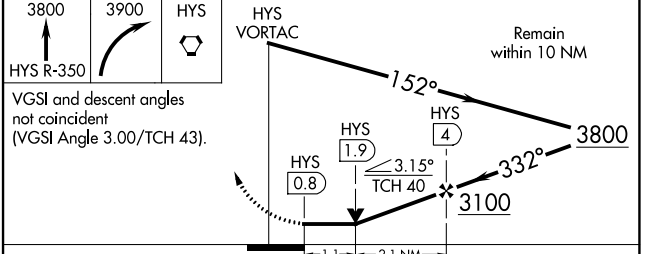
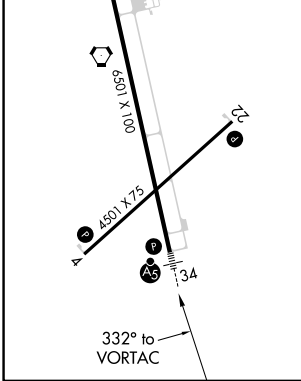
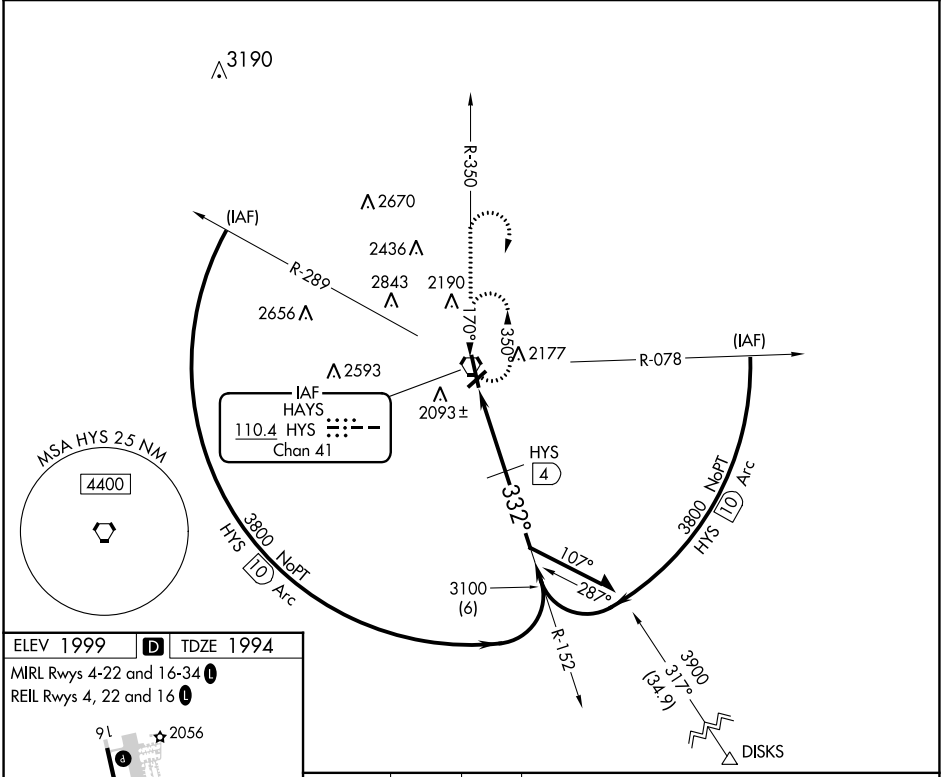
# VOR/DME RWY 34

HAYS RGNL (HYS)

When local altimeter setting not received, use Russell altimeter setting: increase all MDA 80 feet and visibility S-34 Cat C and Circling Cat C and D 1/4 SM. Circling NA for Cat D northwest of Rwy 4 and west of Rwy 16. VDP NA with Russell altimeter setting. For inop MALSR, increase S-34 Cat D visibility to 1/4 mile.

**MALSR**  
MISSED APPROACH:  
Climb to 3800 via HYS R-350 then climbing right turn to 3900 direct HYS VORTAC and hold.

AWOS-3PT <b>125.525</b>	KANSAS CITY CENTER <b>124.4 322.4</b>	UNICOM <b>122.8 (CTAF)</b>
----------------------------	--	-------------------------------



CATEGORY	A	B	C	D
S-34	2380-1/2	386 (400-1/2)		2380-1 386 (400-1)
CIRCLING	2480-1	481 (500-1)	2560-1 1/2 561 (600-1 1/2)	2680-2 1/4 681 (700-2 1/4)

NC-2, 31 OCT 2024 to 28 NOV 2024

NC-2, 31 OCT 2024 to 28 NOV 2024