

APP CRS	Rwy Idg	<b>5070</b>
<b>081°</b>	TDZE	<b>913</b>
	Apt Elev	<b>934</b>

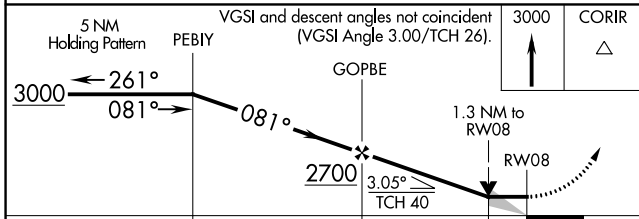
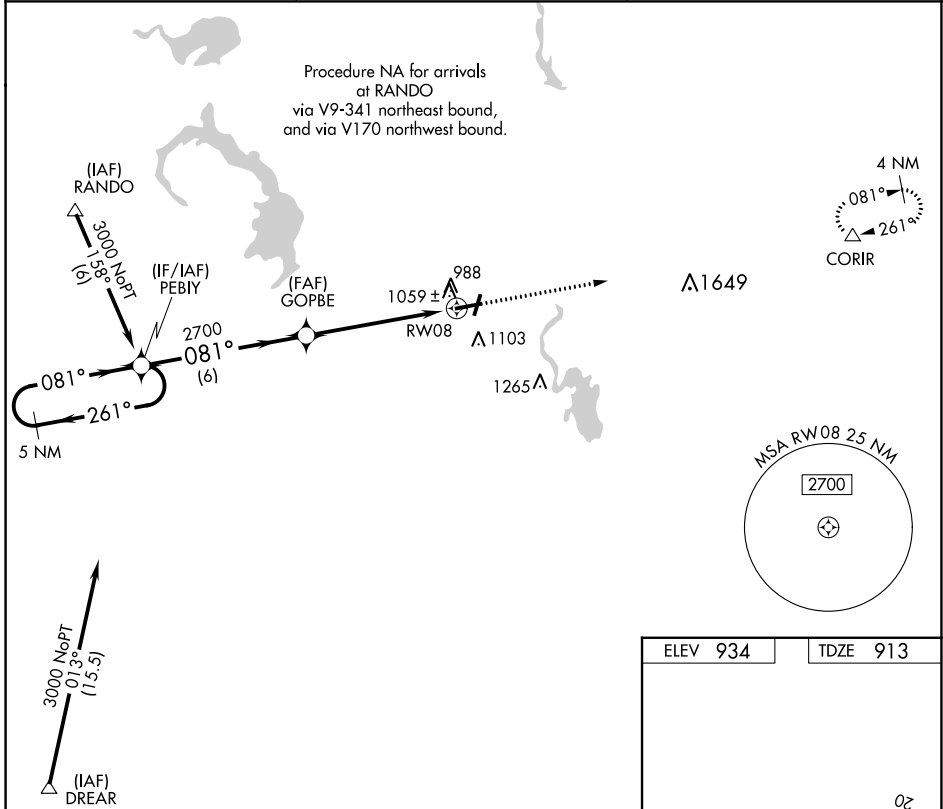
# RNAV (GPS) RWY 8

DODGE COUNTY(UNU)

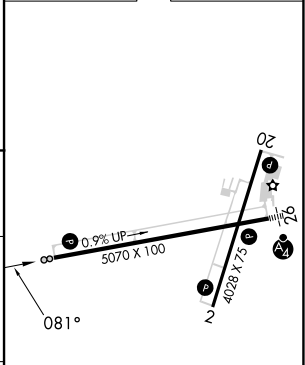
**⚠** DME/DME RNP-0.3 NA. When local altimeter setting not received, use Dane County Rgnl-Truax Fld altimeter setting and increase all MDAs 100 feet, and increase Circling Cat C visibility ¼ SM. VDP NA when using Dane County Rgnl-Truax Fld altimeter setting.

**⚠** MISSED APPROACH: Climb to 3000 direct CORIR and hold.

AWOS-3 <b>120.825</b>	MADISON APP CON ★ <b>119.15 343.7</b>	UNICOM <b>122.7 (CTAF) 0</b>
--------------------------	--	---------------------------------



ELEV 934	TDZE 913
----------	----------



CATEGORY	A	B	C	D
LNAV MDA	1320-1	407 (400-1)	1320-1¼ 407 (400-1¼)	NA
<b>C</b> CIRCLING	1440-1	506 (600-1)	1440-1½ 506 (600-1½)	NA

REIL Rwy 2, 8, and 20 0

MIRL Rwy 8-26 and 2-20 0

EC-3, 31 OCT 2024 to 28 NOV 2024

EC-3, 31 OCT 2024 to 28 NOV 2024