

# BORRN SIX DEPARTURE (RNAV)

HOUSTON, TEXAS

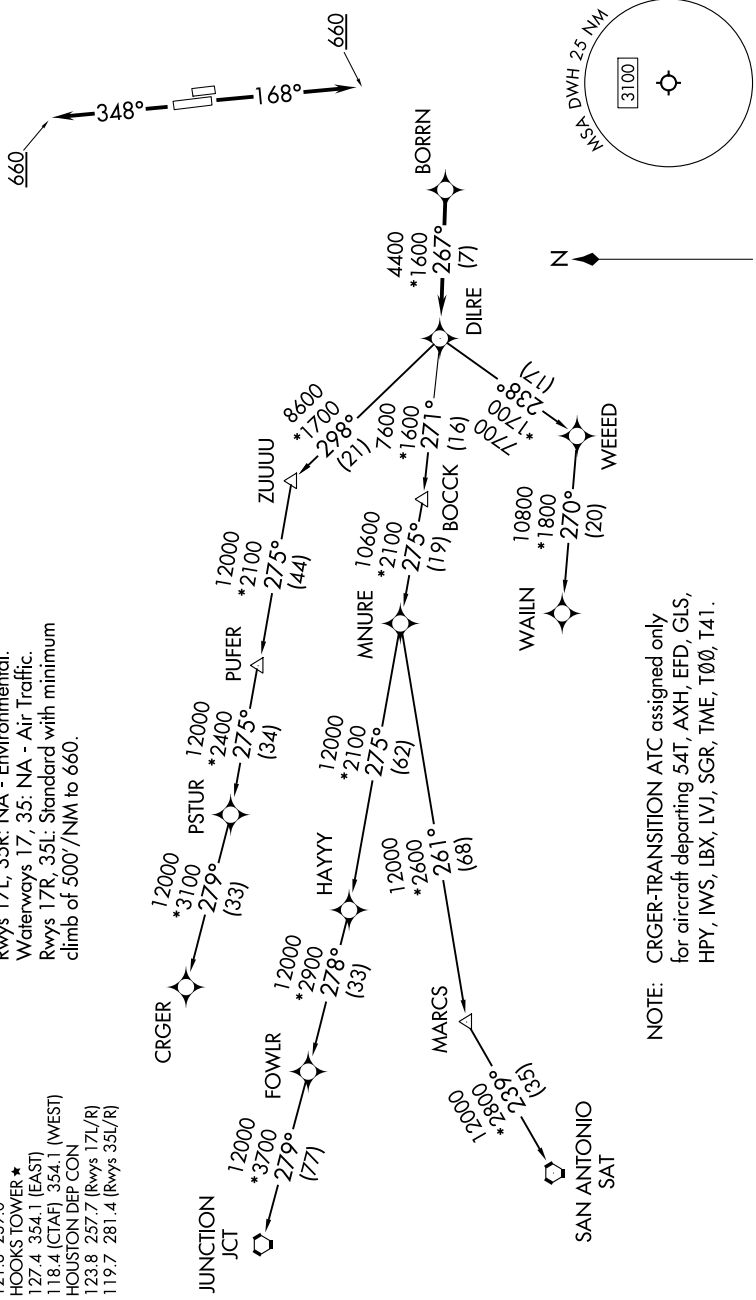
SC-5, 31 OCT 2024 to 28 NOV 2024

RNAV 1 - DME/DME/IRU or GPS.  
RADAR required.

ATIS  
128.375  
CINCDEL  
119.45  
GND CON  
121.8 239.0  
HOOKS TOWER \*  
127.4 354.1 (EAST)  
118.4 (CTAF) 354.1 (WEST)  
HOUSTON DEP CON  
123.8 257.7 (Rwys 17L/R)  
119.7 281.4 (Rwys 35L/R)

### TAKEOFF MINIMUMS

Rwys 17L, 35R: NA - Environmental.  
Waterways 17, 35: NA - Air Traffic.  
Rwys 17R, 35L: Standard with minimum  
climb of 500'/NM to 660.



NOTE: CRGR-TRANSITION ATC assigned only for aircraft departing 54T, AXH, EFD, GLS, HPY, IWS, LBX, LVJ, SGR, TME, T00, T41.

(NARRATIVE ON FOLLOWING PAGE)

NOTE: Chart not to scale.

# BORRN SIX DEPARTURE (RNAV)

(BORRN6.BORRN) 30NOV23

HOUSTON, TEXAS

DAVID WAYNE HOOKS MEML (DWH)

SC-5, 31 OCT 2024 to 28 NOV 2024