

EL DORADO ONE DEPARTURE

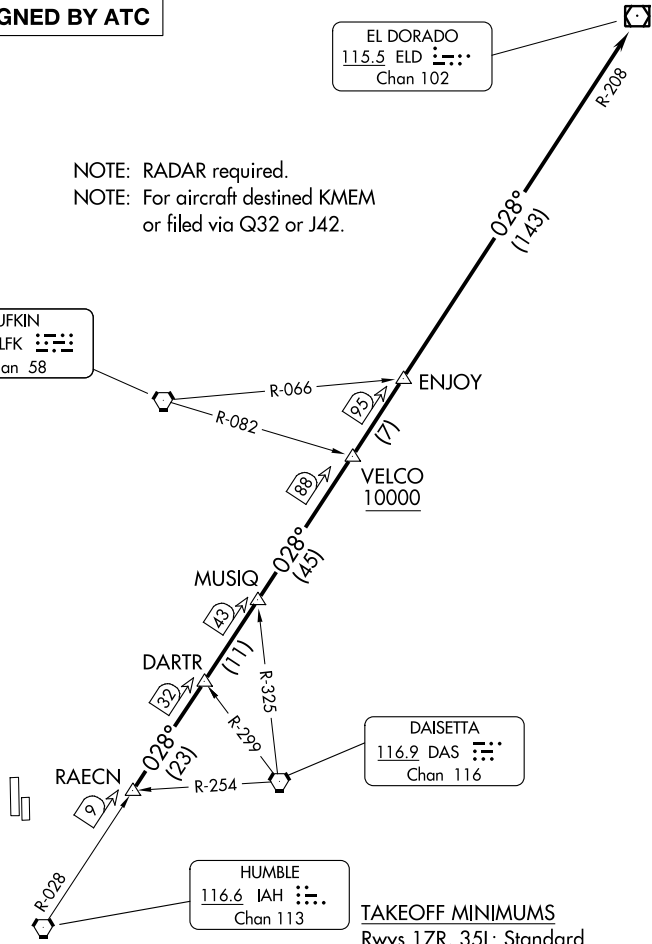
ATIS
128.375
CLNC DEL
119.45
GND CON
121.8 239.0
HOOKS TOWER★
127.4 354.1 (EAST)
118.4 (CTAF) 354.1 (WEST)
HOUSTON DEP CON
119.7 281.4

**TOP ALTITUDE:
ASSIGNED BY ATC**

EL DORADO
115.5 ELD
Chan 102

NOTE: RADAR required.
NOTE: For aircraft destined KMEM
or filed via Q32 or J42.

LUFKIN
112.1 LFK
Chan 58



DAISETTA
116.9 DAS
Chan 116

HUMBLE
116.6 IAH
Chan 113

TAKEOFF MINIMUMS
Rwys 17R, 35L: Standard.
Rwys 17L, 35R: NA - Environmental.
Waterway 17, 35: NA - Air Traffic.

SC-5, 31 OCT 2024 to 28 NOV 2024

SC-5, 31 OCT 2024 to 28 NOV 2024

NOTE: Chart not to scale.

DEPARTURE ROUTE DESCRIPTION

TAKEOFF ALL RUNWAYS: When entering controlled airspace, climb on assigned heading for RADAR vectors to RAECN INT. Maintain ATC assigned altitude. Expect filed altitude 10 minutes after departure, thence . . .

. . . on IAH R-028 and the ELD R-208 to ELD VOR/DME, cross VELCO INT at or above 10000.