

KARRR SEVEN DEPARTURE (RNAV)

SC-5, 31 OCT 2024 to 28 NOV 2024

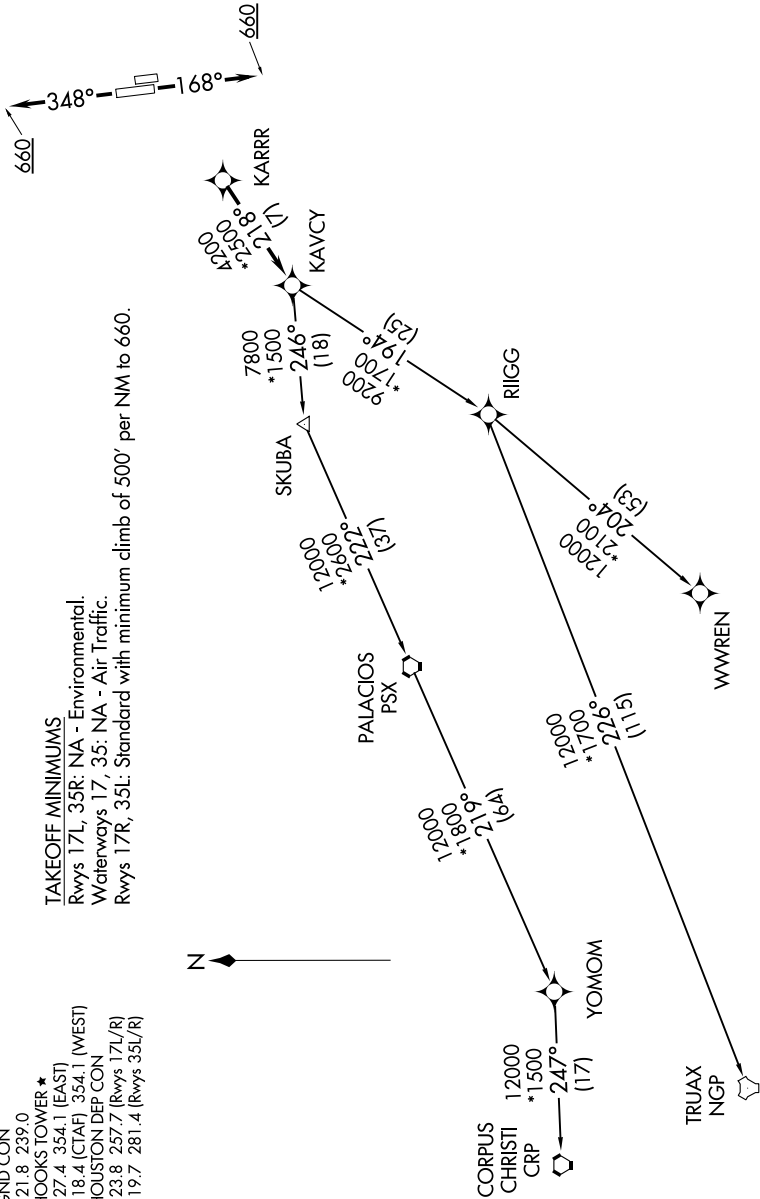
RNAV-1 DME/DME/IRU or GPS.
RADAR required.

TAKEOFF MINIMUMS

Rwys 17L, 35R: NA - Environmental.
 Waterways 17, 35: NA - Air Traffic.
 Rwys 17R, 35L: Standard with minimum climb of 500' per NM to 660.

ATIS 128.375
 CINC DEL 119.45
 GND CON 121.8 239.0
 HOOKS TOWER* 127.4 354.1 (EAST)
 118.4 (CTAF) 354.1 (WEST)
 HOUSTON DEP CON 123.8 257.7 (Rwys 17L/R)
 119.7 281.4 (Rwys 35L/R)

TOP ALTITUDE:
ASSIGNED BY ATC



NOTE: Chart not to scale.

(NARRATIVE ON FOLLOWING PAGE)

SC-5, 31 OCT 2024 to 28 NOV 2024