

ATIS  
 128.375  
 CLNC DEL  
 119.45  
 GND CON  
 121.8 239.0  
 HOOKS TOWER\*  
 127.4 354.1 (EAST)  
 118.4 (CTAF) 354.1 (WEST)  
 HOUSTON DEP CON  
 119.7 281.4

**TOP ALTITUDE:  
 ASSIGNED BY ATC**

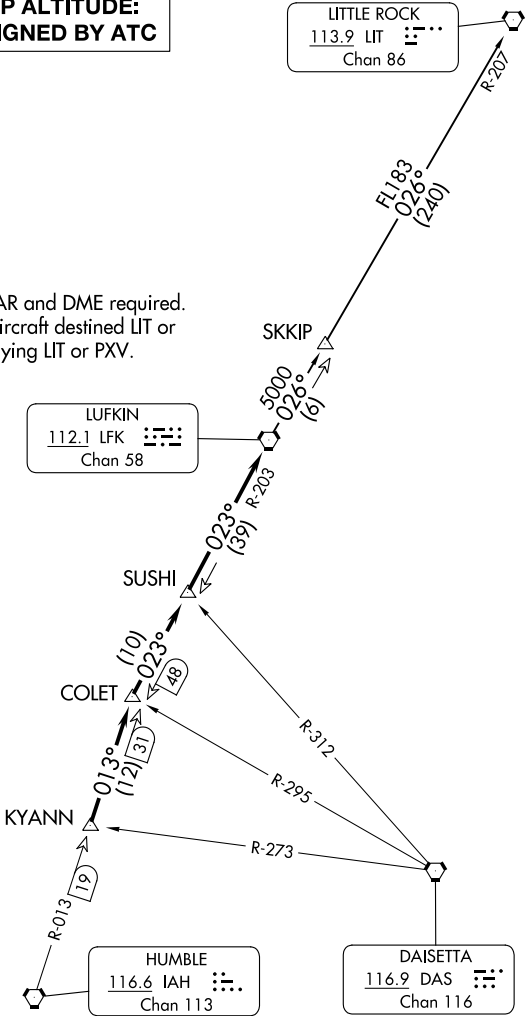
LITTLE ROCK  
 113.9 LIT  
 Chan 86

NOTE: RADAR and DME required.  
 NOTE: For aircraft destined LIT or  
 overflying LIT or PXV.

LUFKIN  
 112.1 LFK  
 Chan 58

DAISETTA  
 116.9 DAS  
 Chan 116

HUMBLE  
 116.6 IAH  
 Chan 113



### TAKEOFF MINIMUMS

Rwys 17L, 35R: NA - Environmental.  
 Waterways 17, 35: NA - Air Traffic.  
 Rwys 17R, 35L: Standard.

NOTE: Chart not to scale.

(CONTINUED ON FOLLOWING PAGE)

SC-5, 31 OCT 2024 to 28 NOV 2024

SC-5, 31 OCT 2024 to 28 NOV 2024