

WYLSN EIGHT DEPARTURE (RNAV)

HOUSTON, TEXAS

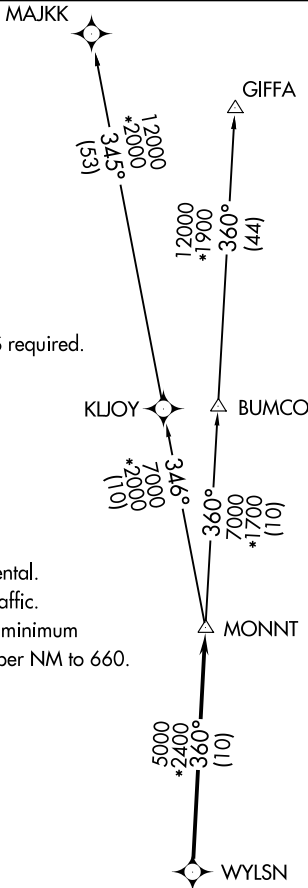
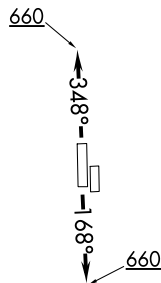
ATIS
 128.375
 CLNC DEL
 119.45
 GND CON
 121.8 239.0
 HOOKS TOWER*
 127.4 354.1 (EAST)
 118.4 (CTAF) 354.1 (WEST)
 HOUSTON DEP CON
 123.8 257.7 (Rwy 17L/R)
 119.7 281.4 (Rwy 35L/R)

**TOP ALTITUDE:
ASSIGNED BY ATC**

NOTE: RADAR required.
 NOTE: DME/DME/IRU or GPS required.
 NOTE: RNAV 1.

TAKEOFF MINIMUMS

Rwys 17L, 35R: NA - Environmental.
 Waterways 17, 35: NA - Air Traffic.
 Rwys 17R, 35L: Standard with minimum
 climb of 500' per NM to 660.



DEPARTURE ROUTE DESCRIPTION

TAKEOFF RUNWAY 17R: Climb on heading 168° to 660 for RADAR vectors to WYLSN, thence. . . .
TAKEOFF RUNWAY 35L: Climb on heading 348° to 660 for RADAR vectors to WYLSN, thence. . . .

. . . .on track 360° to MONNT, then on (transition). Maintain ATC assigned altitude. Expect filed altitude 10 minutes after departure.

GIFFA TRANSITION (WYLSN8.GIFFA)
MAJJK TRANSITION (WYLSN8.MAJKK)

NOTE: Chart not to scale.

WYLSN EIGHT DEPARTURE (RNAV)

HOUSTON, TEXAS