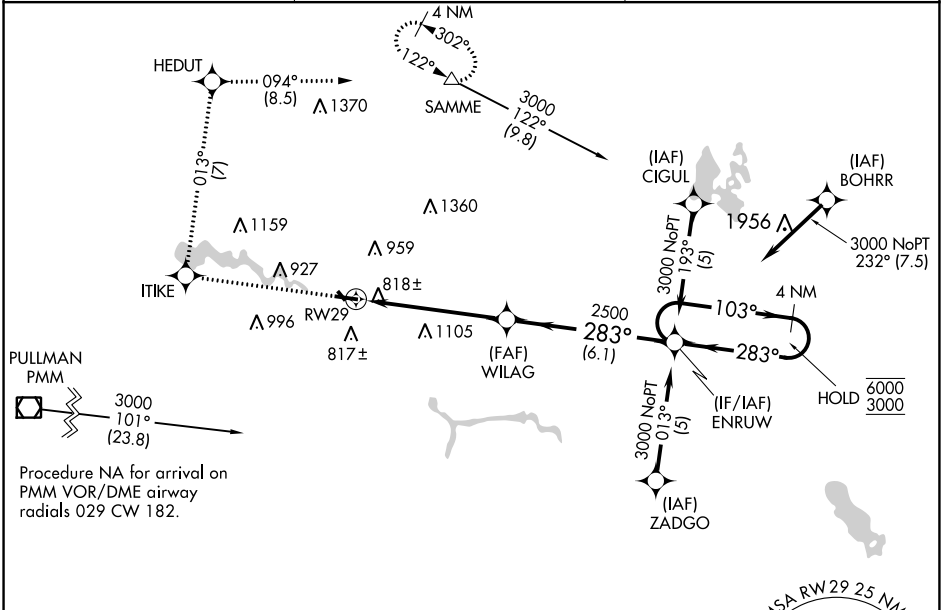


APP CRS 283°	Rwy ldg TDZE Apt Elev	4300 705 706
------------------------	-----------------------------	---

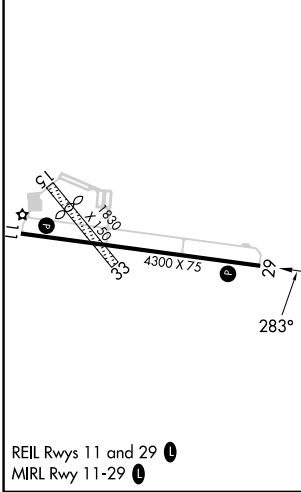
RNAV (GPS) RWY 29

PADGHAM FLD (35D)

RNP APCH - GPS		MISSED APPROACH: Climb to 3000 direct ITIKE and on track 013° to HEDUT and track 094° to SAMME and hold.
<p>NA Circling NA to Rwy 15 and 33. Rwy 29 helicopter visibility reduction below $\frac{3}{8}$ SM NA. Use Holland altimeter setting; when not received, use Grand Rapids altimeter setting and increase all MDAs 40 feet and LNAV Cat C visibility $\frac{1}{8}$ SM.</p>		
BIV ASOS 119.025	GREAT LAKES APP CON ★ 128.4 257.6	UNICOM 122.8 (CTAF) 0



ELEV 706	TDZE 705
----------	----------



3000	ITIKE	HEDUT	SAMME	ENRUW	4 NM Holding Pattern
↑	tr 013°	tr 094°	△		
WILAG		ENRUW		103°	6000
RW29		2500		283°	3000
5.4 NM		6.1 NM			
CATEGORY	A	B	C	D	
LNAV MDA	1380-1	675 (700-1)	1380-1 $\frac{7}{8}$ 675 (700-1 $\frac{7}{8}$)	NA	
C CIRCLING	1380-1	674 (700-1)	1460-2 $\frac{1}{4}$ 754 (800-2 $\frac{1}{4}$)	NA	

ALLEGAN, MICHIGAN
Orig-C 23FEB23

42°32'N-85°49'W

RNAV (GPS) RWY 29

PADGHAM FLD (35D)

EC-1, 31 OCT 2024 to 28 NOV 2024

EC-1, 31 OCT 2024 to 28 NOV 2024