

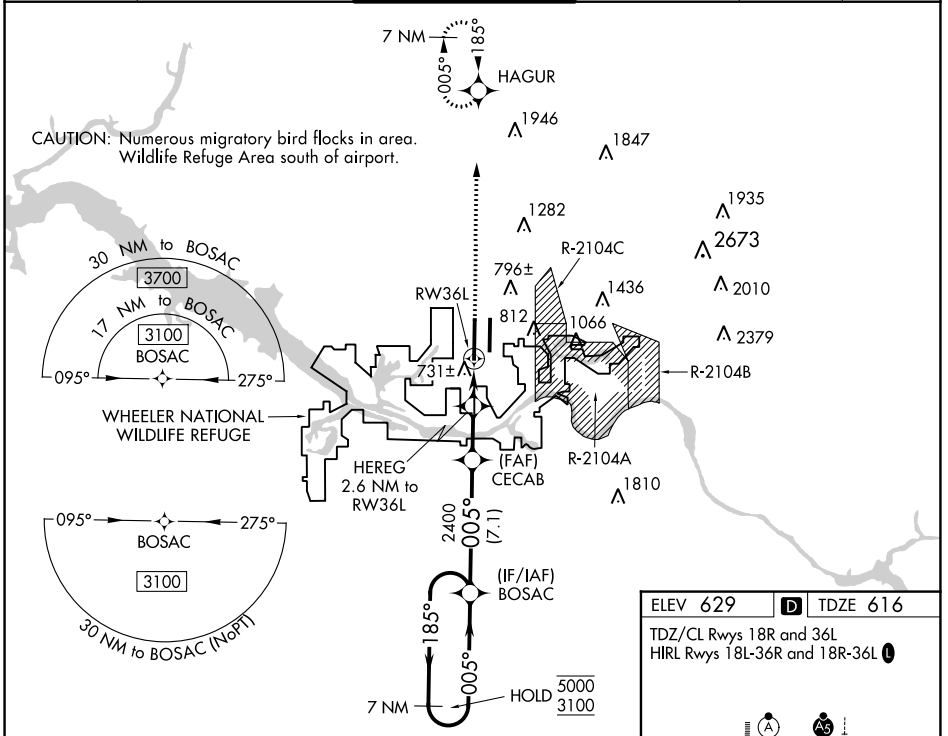
WAAS CH <b>82606</b> <b>W36A</b>	APP CRS <b>005°</b>	Rwy Idg <b>12600</b> TDZE <b>616</b> Apt Elev <b>629</b>
--	------------------------	--

# RNAV (GPS) RWY 36L

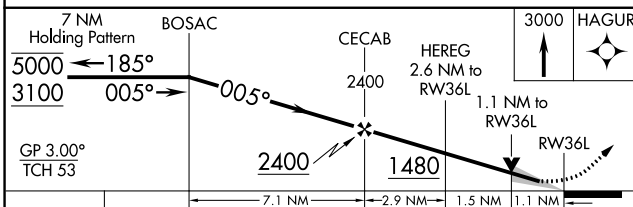
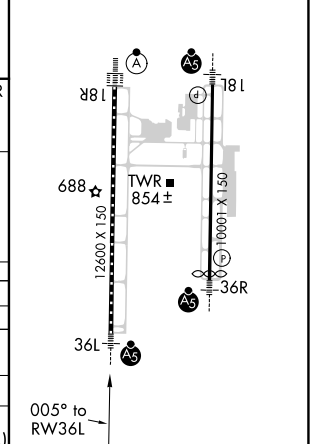
HUNTSVILLE INTL-CARL T JONES FLD (HSV)

RNP APCH-GPS.	<p><b>ASR</b> Circling NA for Cats C/D/E east of Rwy 18L-36R. Simultaneous approach authorized. LNAV procedure NA during simultaneous operations. Use of FD or AP required during simultaneous operations. For uncompensated Baro-VNAV systems, LNAV/VNAV NA below -8°C or above 54°C. For inop ALS, increase LPV Cat E visibility to RVR 4000, LNAV/VNAV all Cats visibility to RVR 4500, and LNAV Cat E visibility to RVR 6000.</p>	MALSR	MISSED APPROACH: Climb to 3000 direct HAGUR and hold.
---------------	---	-------	--

ATIS <b>121.25</b>	HUNTSVILLE APP CON * <b>125.6 354.1</b>	HUNTSVILLE TOWER * <b>127.6 (CTAF) 350.35</b>	GND CON <b>121.9 269.525</b>	CLNC DEL <b>120.35</b>	UNICOM <b>122.95</b>
-----------------------	--	--	---------------------------------	---------------------------	-------------------------



ELEV 629	<b>D</b> TDZE 616
TDZ/CL Rwys 18R and 36L	
HIRL Rwys 18L-36R and 18R-36L	



CATEGORY	A	B	C	D	E
LPV DA		816/18	200 (200-½)		
LNAV/VNAV DA		892/24	276 (300-½)		
LNAV MDA	1000/24	384 (400-½)	1000/35	384 (400-¾)	
<b>C</b> CIRCLING	1160-1	531 (600-1)	1160-1½ 531 (600-1½)	1240-2 611 (700-2)	1260-2¼ 631 (700-2¼)

SE-4, 31 OCT 2024 to 28 NOV 2024

SE-4, 31 OCT 2024 to 28 NOV 2024