

| | | |
|--|------------------------|---|
| LOC/DME I-GVL 110.55 Chan 42 (Y) | APP CRS 044° | Rwy Idg 5370 TDZE 1275 Apt Elev 1277 |
|--|------------------------|---|

ILS or LOC RWY 5

LEE GILMER MEML (GVL)

DME required.
RADAR required for procedure entry.

⚠ Circling Rwy 11, 29 NA at night.
For inop ALS increase S-LOC 5 Cats C and D visibility to 1 SM.

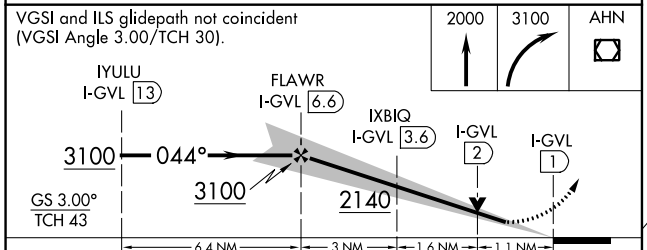
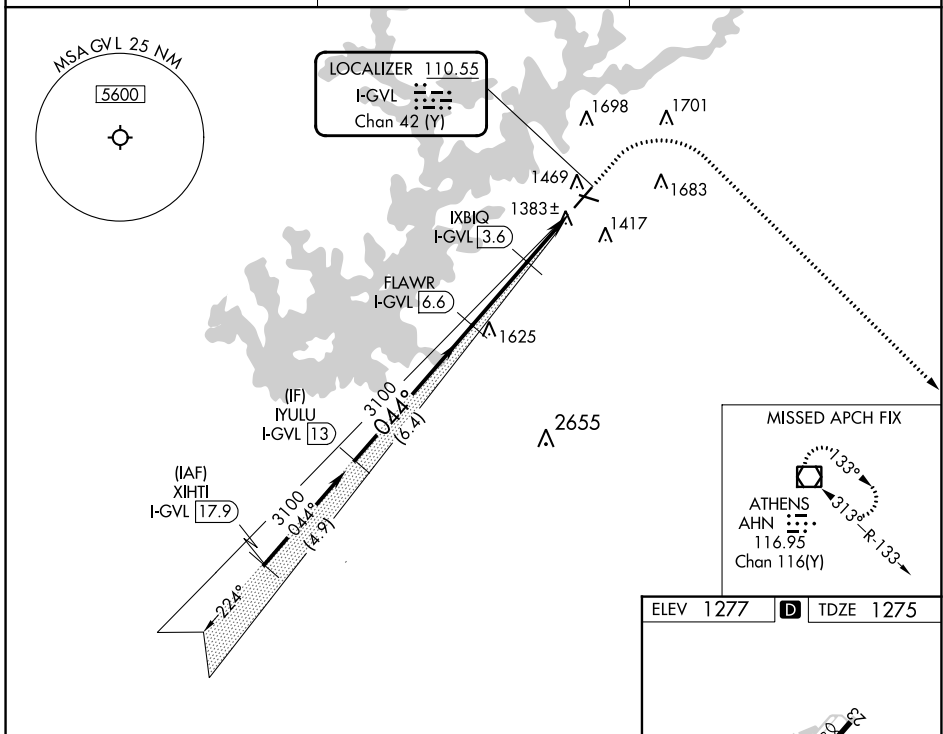
MALSR

MISSED APPROACH: Climb to 2000 then climbing right turn to 3100 direct AHN VOR/DME and hold.

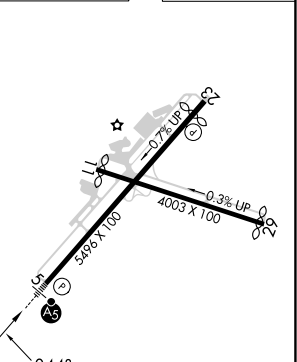
ASOS
126.475

ATLANTA APP CON*
132.475 291.1

UNICOM
123.075 (CTAF) **0**



ELEV 1277 **D** TDZE 1275



| CATEGORY | A | B | C | D |
|----------|-----------------------|-----------------------|-----------------------|-------------------------|
| S-ILS 5 | 1475-½ 200 (200-½) | | | |
| S-LOC 5 | 1640-½ | 365 (400-½) | 1640-⅝ | 365 (400-⅝) |
| CIRCLING | 1780-1 503 (600-1) | 2000-1 723 (800-1) | 2000-2 723 (800-2) | 2020-2½ 743 (800-2½) |

HIRL Rwy 5-23 **0**

FAF to MAP 5.6 NM

| | | | | | |
|---------|------|------|------|------|------|
| Knots | 60 | 90 | 120 | 150 | 180 |
| Min:Sec | 5:36 | 3:44 | 2:48 | 2:14 | 1:52 |

SE-4, 31 OCT 2024 to 28 NOV 2024

SE-4, 31 OCT 2024 to 28 NOV 2024