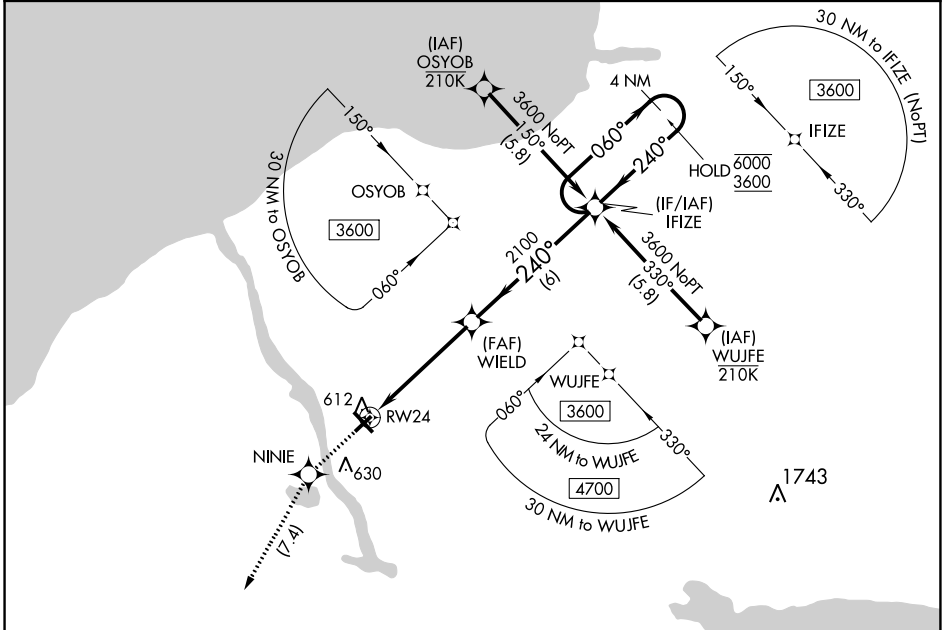


APP CRS 240°	Rwy Idg TDZE Apt Elev	3997 469 475
------------------------	-----------------------------	---

RNAV (GPS) RWY 24

OSWEGO COUNTY (FZY)

RNP APCH - GPS.		MISSED APPROACH: Climb to 3000 direct NINIE and left turn direct LYSAN and hold, continue climb-in-hold to 3000.
Rwy 24 helicopter visibility reduction below 1 SM NA.		
ASOS 119.275	SYRACUSE APP CON 126.125 269.125	UNICOM 123.0 (CTAF) 0



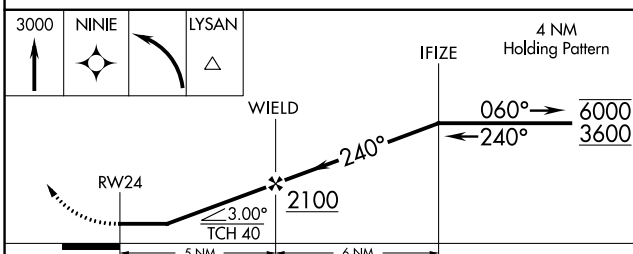
NE-2, 31 OCT 2024 to 28 NOV 2024

NE-2, 31 OCT 2024 to 28 NOV 2024

ELEV 475	TDZE 469
----------	----------

Diagram showing RWY 24 and RWY 33. RWY 24 is 5126 x 100 ft with a 0.5% LUF. RWY 33 is 3997 x 100 ft with a 0.3% LUF. The diagram also shows the 240° heading and 240° heading for RWY 33.

MIRL Rwy 6-24 0
HIRL Rwy 15-33 0
REIL Rwy 15 and 33 0
REIL Rwy 6 and 24



CATEGORY	A	B	C	D
LNVA MDA	960-1	491 (500-1)	960-1 $\frac{3}{8}$	491 (500-1 $\frac{3}{8}$)
CIRCLING	960-1	485 (500-1)	960-1 $\frac{1}{2}$ 485 (500-1 $\frac{1}{2}$)	1040-2 565 (600-2)