

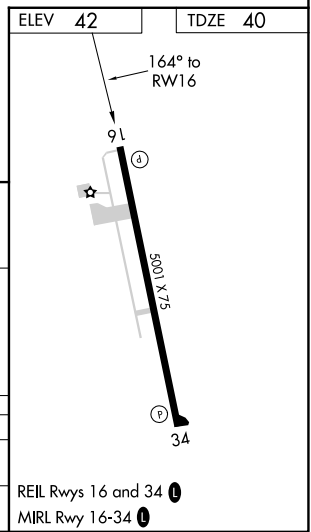
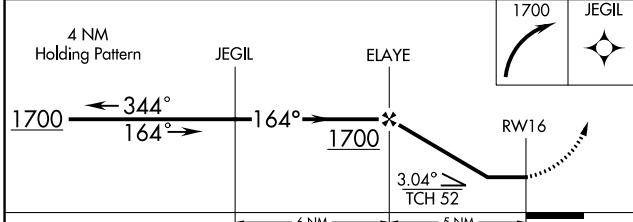
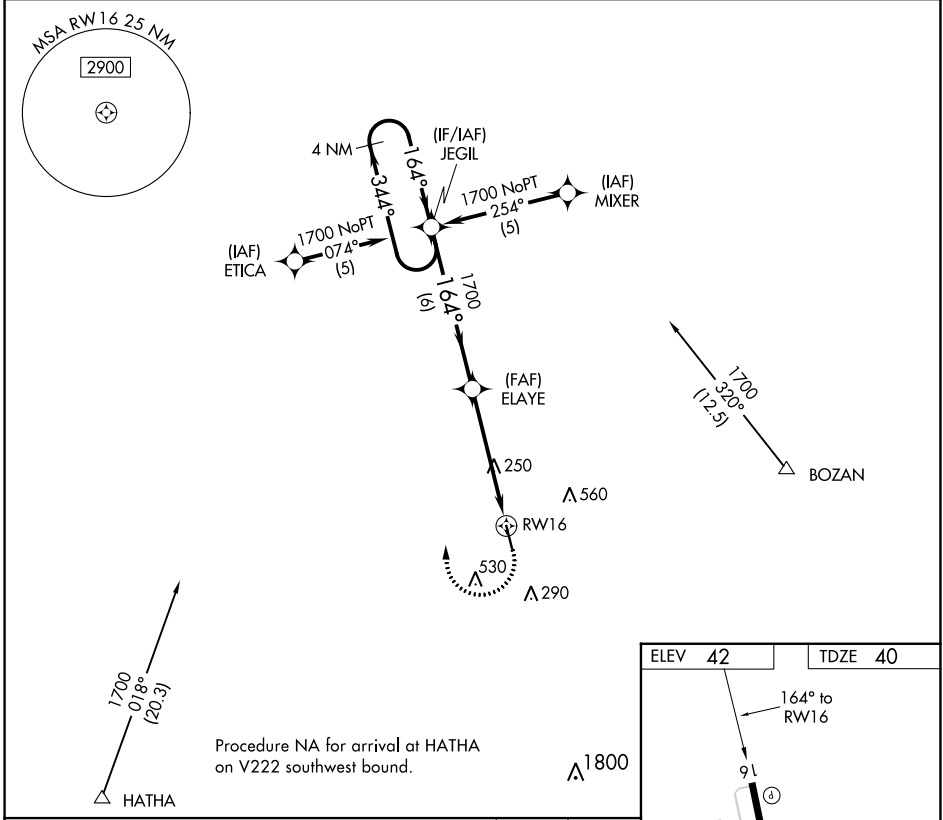
APP CRS <b>164°</b>	Rwy Idg <b>5001</b>
	TDZE <b>40</b>
	Apt Elev <b>42</b>

# RNAV (GPS) RWY 16

EUNICE (4R7)

RNP APCH.	MISSED APPROACH: Climbing right turn to 1700 direct JEGIL WP and hold.
<p>▼ Use Lafayette Rgnl/Paul Fournet Fld altimeter setting.</p> <p>▲ NA Procedure NA at night. Rwy 16 helicopter visibility reduction below 1 SM NA.</p>	

LFT ASOS <b>134.05</b>	LAFAYETTE APP CON ★ <b>128.7 268.7</b>	GCO <b>135.075</b>	UNICOM <b>122.8 (CTAF) ①</b>
---------------------------	---	-----------------------	---------------------------------



CATEGORY	A	B	C	D
RNAV MDA	580-1	540 (600-1)	580-1½ 540 (600-1½)	NA
CIRCLING	620-1	578 (600-1)	940-2¾ 898 (900-2¾)	NA

SC-4, 31 OCT 2024 to 28 NOV 2024

SC-4, 31 OCT 2024 to 28 NOV 2024