

WAAS CH <b>53328</b> <b>W01A</b>	APP CRS <b>006°</b>	Rwy Idg TDZE Apt Elev	<b>6503</b> <b>346</b> <b>346</b>
--	------------------------	-----------------------------	---

# RNAV (GPS) RWY 1

EVERETT-STEWART RGNL (UCY)

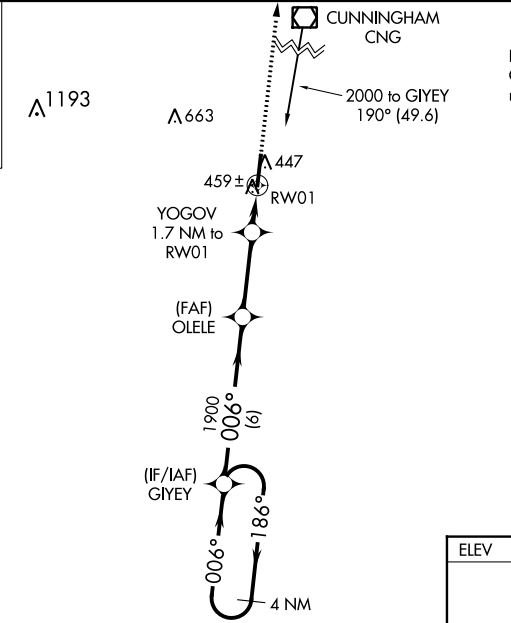
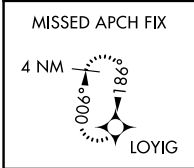
**⚠ NA**  
 For uncompensated Baro-VNAV systems, LNAV/VNAV NA below -15°C (5°F) or above 54°C (130°F). DME/DME RNP-0.3 NA. VDP and Baro-VNAV NA when using Dyersburg altimeter setting. When local altimeter setting not received, use Dyersburg altimeter setting and increase all DA 72 feet and all MDA 80 feet, increase LNAV/VNAV all Cats visibility to 1½ SM, LNAV Cat C/D visibility to 1½ SM, and Circling Cat D visibility to 2½ SM. For inoperative ALS, increase LNAV/VNAV and LNAV all Cats visibility to 1 SM. For inoperative ALS when using Dyersburg altimeter setting, increase LPV all Cats visibility to ¾ SM, LNAV/VNAV all Cats visibility to 1¼ SM, and LNAV Cat D visibility to 1¾ SM. Inoperative table does not apply to LPV all Cats and LNAV Cats C/D.

**ODALS**  
  
**MISSED APPROACH:**  
 Climb to 2900 direct LOYIG and hold.

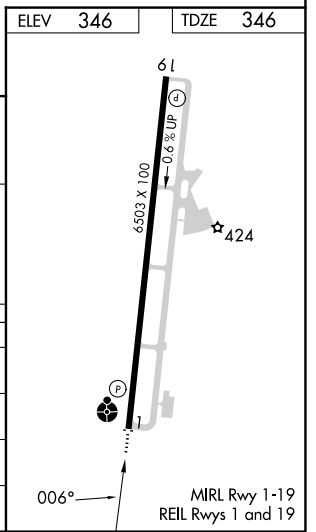
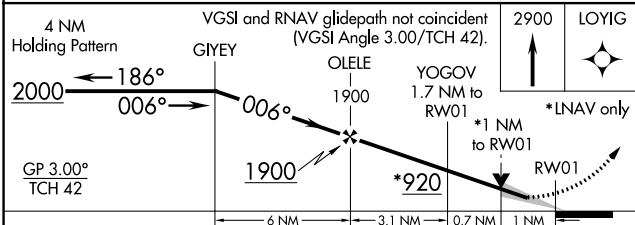
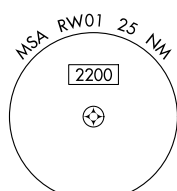
AWOS-3  
**135.325**

MEMPHIS CENTER  
**133.65 292.15**

UNICOM  
**122.7 (CTAF) 0**



Procedure NA for arrival on CNG VOR/DME airway radials 133 CW 240.



CATEGORY	A	B	C	D
LPV DA		546-¾	200 (200-¾)	
LNAV/VNAV DA		640-⅞	294 (300-⅞)	
LNAV MDA	720-¾	374 (400-¾)	720-1	374 (400-1)
<b>C</b> CIRCLING	760-1 414 (500-1)	800-1 454 (500-1)	820-1½ 474 (500-1½)	1020-2¼ 674 (700-2¼)

SE-1, 31 OCT 2024 to 28 NOV 2024

SE-1, 31 OCT 2024 to 28 NOV 2024