

APP CRS	Rwy Idg	4352
225°	TDZE	289
	Apt Elev	290

RNAV (GPS) RWY 22

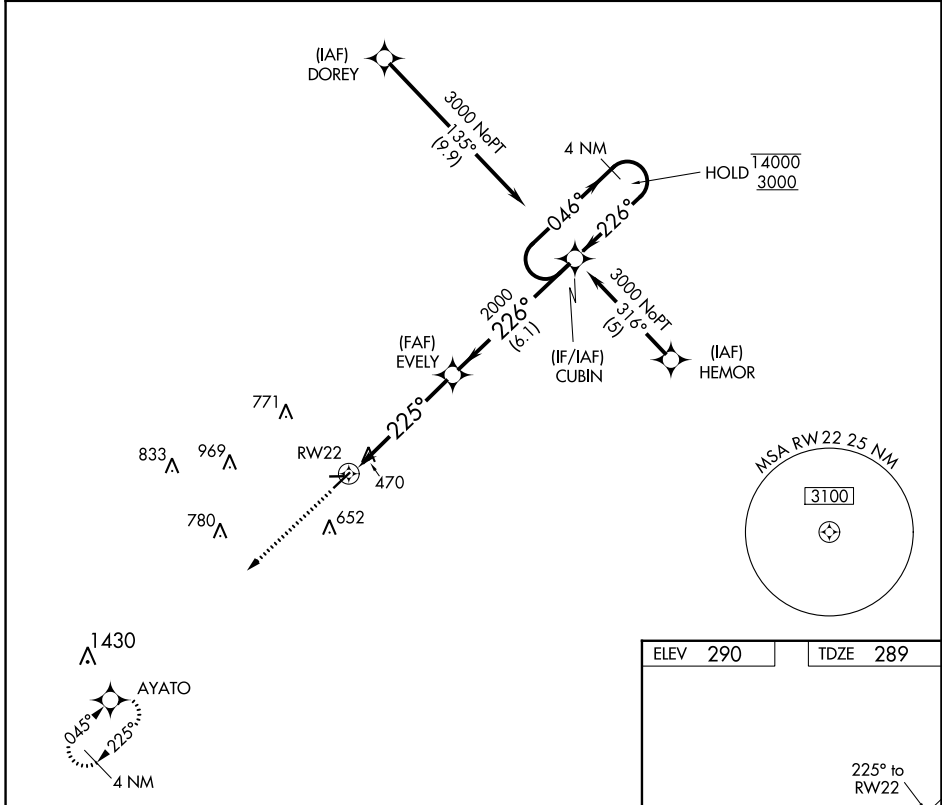
KIRK FLD (PGR)

RNP APCH - GPS

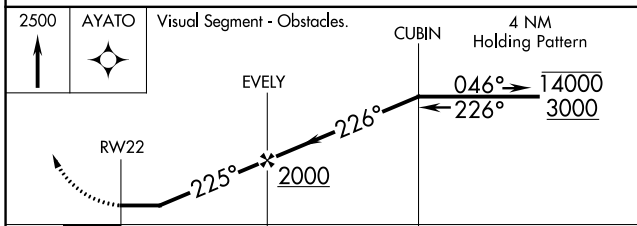
NA Circling NA to Rwys 8 and 26. Rwy 22 helicopter visibility reduction below $\frac{1}{2}$ SM NA. Use Jonesboro altimeter setting; when not received, use Walnut Ridge altimeter setting and increase all MDA 20 feet.

MISSED APPROACH: Climb to 2500 direct AYATO and hold.

JBR ASOS 118.525	MEMPHIS CENTER 120.075 289.4	UNICOM 122.8 (CTAF) 0
----------------------------	--	---------------------------------



ELEV 290	TDZE 289
----------	----------



2500	AYATO	Visual Segment - Obstacles.	CUBIN	4 NM Holding Pattern
↑	✧			
		EVELY	046° → 1400	← 226° 3000
		RW22		
		5.1 NM	6.1 NM	
CATEGORY	A	B	C	D
LNVA MDA	820-1¼	531 (600-1¼)	NA	
CIRCLING	860-1¼ 570 (600-1¼)	1000-1¼ 710 (800-1¼)	NA	
MIRL Rwy 4-22 0				
REIL Rws 4 and 22 0				

SC-1, 31 OCT 2024 to 28 NOV 2024

SC-1, 31 OCT 2024 to 28 NOV 2024