

APP CRS	Rwy Idg	<b>4011</b>
<b>045°</b>	TDZE	<b>290</b>
	Apt Elev	<b>290</b>

# RNAV (GPS) RWY 4

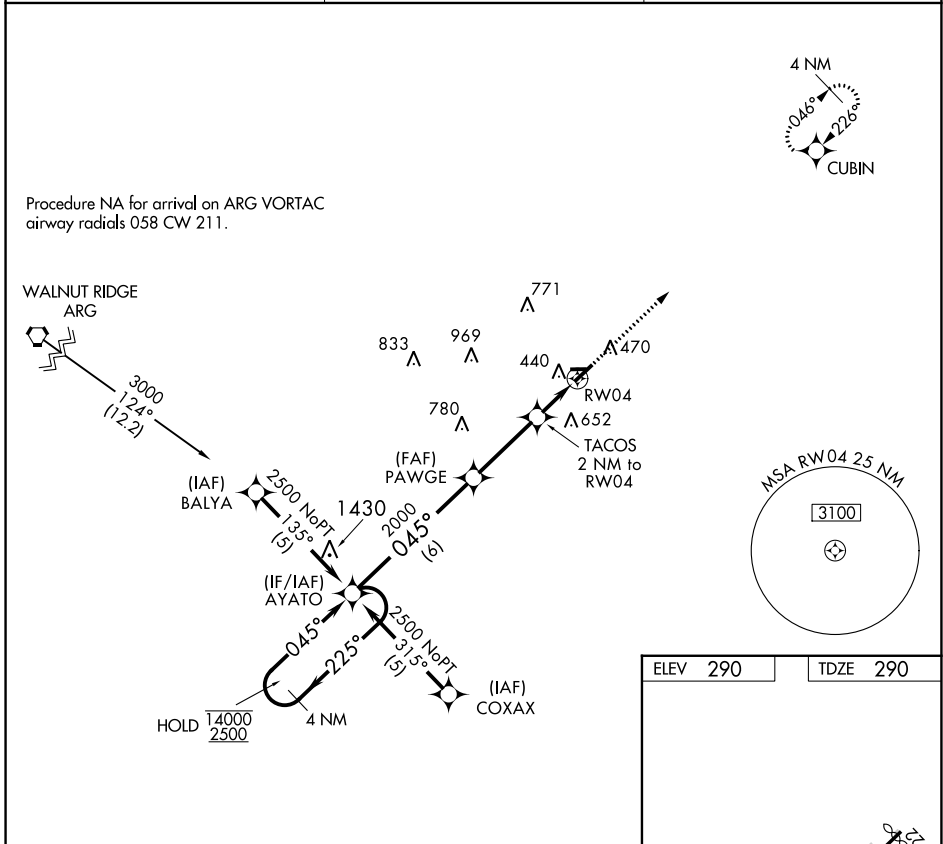
KIRK FLD (PGR)

RNP APCH - GPS

**NA** Circling NA to Rwy 8 and 26. Rwy 4 helicopter visibility reduction below 3/4 SM NA. Use Jonesboro altimeter setting; when not received, use Walnut Ridge altimeter setting and increase all MDA 20 feet.

MISSED APPROACH: Climb to 3000 direct CUBIN and hold.

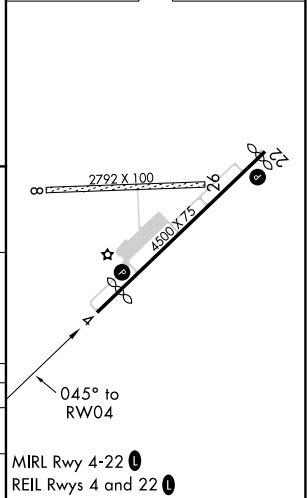
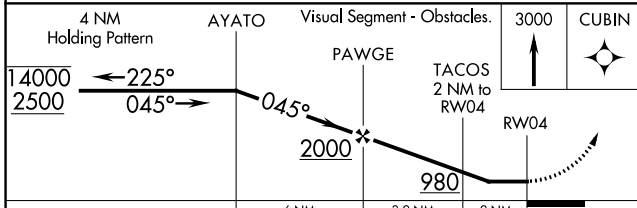
JBR ASOS <b>118.525</b>	MEMPHIS CENTER <b>120.075 289.4</b>	UNICOM <b>122.8 (CTAF) 0</b>
----------------------------	--	---------------------------------



SC-1, 31 OCT 2024 to 28 NOV 2024

SC-1, 31 OCT 2024 to 28 NOV 2024

ELEV 290	TDZE 290
----------	----------



CATEGORY	A	B	C	D
LNVA MDA	800-1¼	510 (600-1¼)	NA	
<b>C</b> CIRCLING	860-1¼ 570 (600-1¼)	1000-1¼ 710 (800-1¼)	NA	