

WAAS CH <b>45540</b> <b>W34A</b>	APP CRS <b>334°</b>	Rwy Idg TDZE <b>20</b> Apt Elev <b>20</b>	<b>4477</b>
--	------------------------	---	-------------

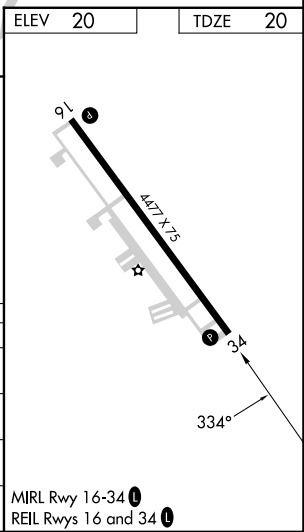
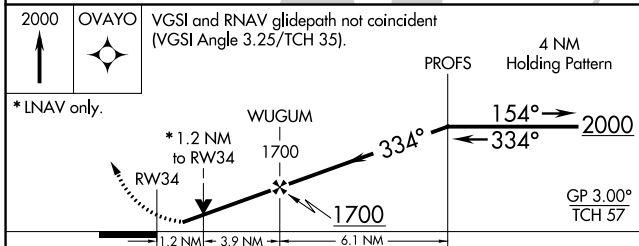
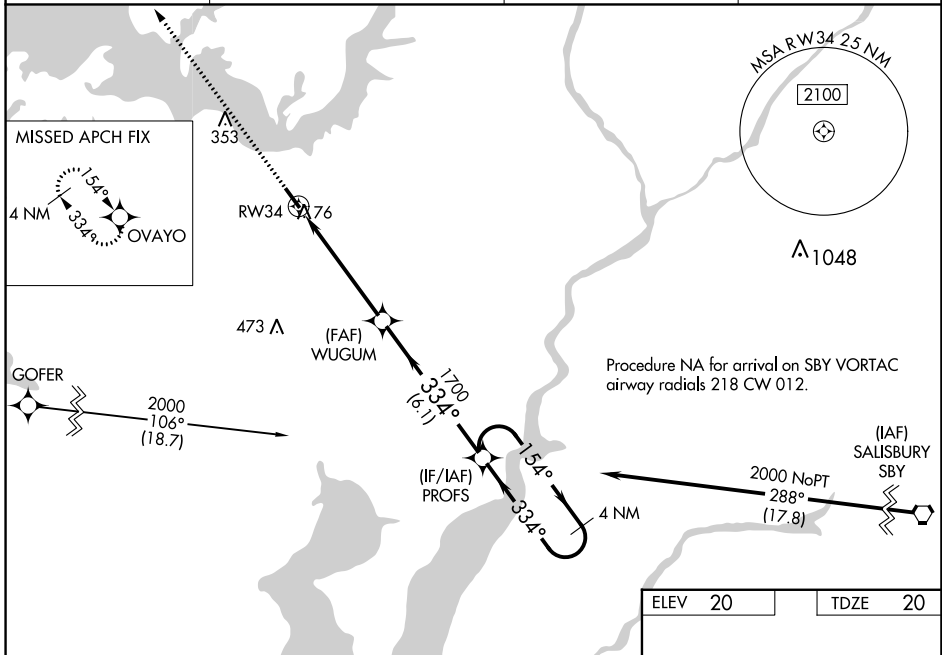
# RNAV (GPS) RWY 34

CAMBRIDGE-DORCHESTER RGNL (CGE)

**⚠** Circling NA at night. For uncompensated Baro-VNAV systems, LNAV/VNAV NA below -15°C (5°F) or above 54°C (130°F). Rwy 34 helicopter visibility reduction below ¾ SM NA. DME/DME RNP-0.3 NA.

**MISSED APPROACH:** Climb to 2000 direct OVAYO and hold.

AWOS-3 <b>120.675</b>	PATXENT APP CON ★ <b>121.0 250.3</b>	UNICOM <b>122.7 (CTAF)</b>	<b>121.9</b> <b>⓪</b>
--------------------------	---	-------------------------------	-----------------------



CATEGORY	A	B	C	D
LPV DA		286-7/8	266 (300-7/8)	
LNAV/VNAV DA		309-7/8	289 (300-7/8)	
LNAV MDA	480-1	460 (500-1)	480-1 3/8	460 (500-1 3/8)
<b>C</b> CIRCLING	480-1	460 (500-1)	660-1 3/4 640 (700-1 3/4)	780-2 1/2 760 (800-2 1/2)

MIRL Rwy 16-34 **⓪**  
REIL Rws 16 and 34 **⓪**

NE-3, 31 OCT 2024 to 28 NOV 2024

NE-3, 31 OCT 2024 to 28 NOV 2024