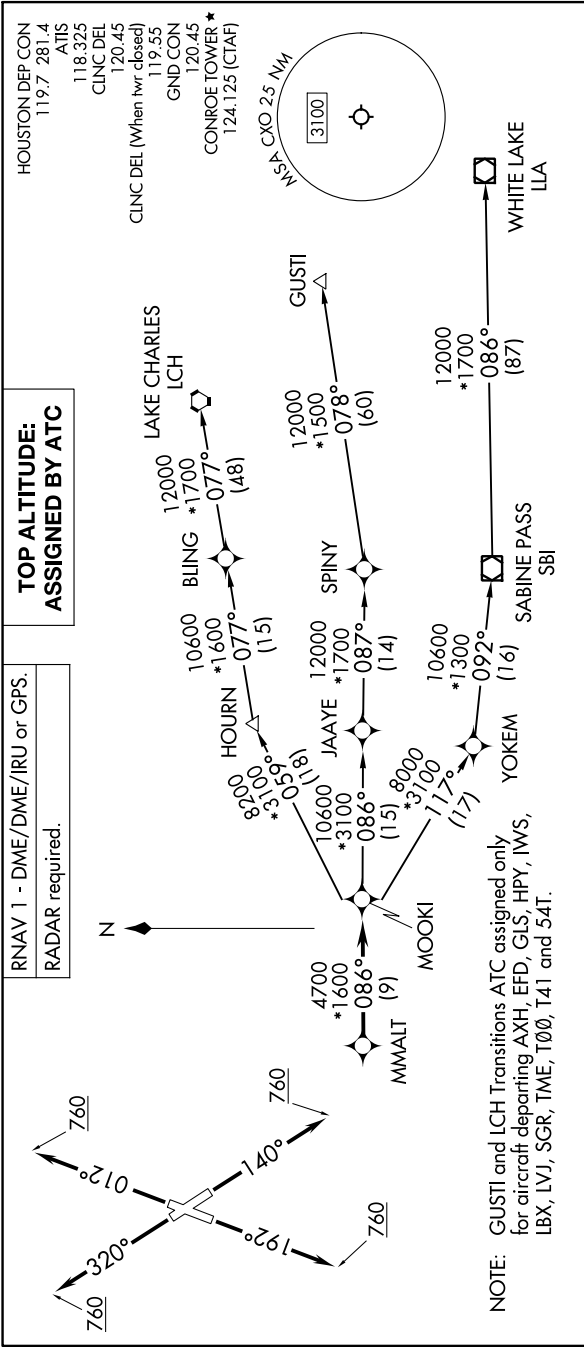


MMALT SEVEN DEPARTURE (RNAV)

SC-5, 31 OCT 2024 to 28 NOV 2024



NOTE: GUSTI and LCH Transitions ATC assigned only for aircraft departing AXH, EFD, GLS, HPY, IWS, LBX, LVJ, SGR, TME, T00, T41 and 54T.

**TOP ALTITUDE:
ASSIGNED BY ATC**

RNAV 1 - DME/DME/IRU or GPS.
RADAR required.

HOUSTON DEP CON
119.7 281.4
ATIS
118.325
CINC DEL
120.45
CINC DEL (When twr closed)
119.55
GND CON
120.45
CONROE TOWER *
124.125 (CTAF)

DEPARTURE ROUTE DESCRIPTION

- TAKEOFF RUNWAY 1: Climb on heading 012° to 760, for RADAR vectors to MMALT, thence. . . .
- TAKEOFF RUNWAY 14: Climb on heading 140° to 760, for RADAR vectors to MMALT, thence. . . .
- TAKEOFF RUNWAY 19: Climb on heading 192° to 760, for RADAR vectors to MMALT, thence. . . .
- TAKEOFF RUNWAY 32: Climb on heading 320° to 760, for RADAR vectors to MMALT, thence. . . .

. . . on track 086° to MOOKI, then on (transition). Maintain ATC assigned altitude.
Expect filed altitude 10 minutes after departure.

TAKEOFF MINIMUMS
Rwys 1, 14, 19, 32: Standard with minimum climb of 500'/NM to 760.

- GUSTI TRANSITION (MMALT7.GUSTI)
- LAKE CHARLES TRANSITION (MMALT7.LCH)
- WHITE LAKE TRANSITION (MMALT7.LLA)

NOTE: Chart not to scale.

SC-5, 31 OCT 2024 to 28 NOV 2024