

WAAS CH 86719 W01A	APP CRS 012°	Rwy Idg TDZE Apt Elev	5000 237 245
--	------------------------	-----------------------------	---

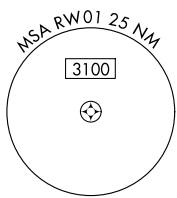
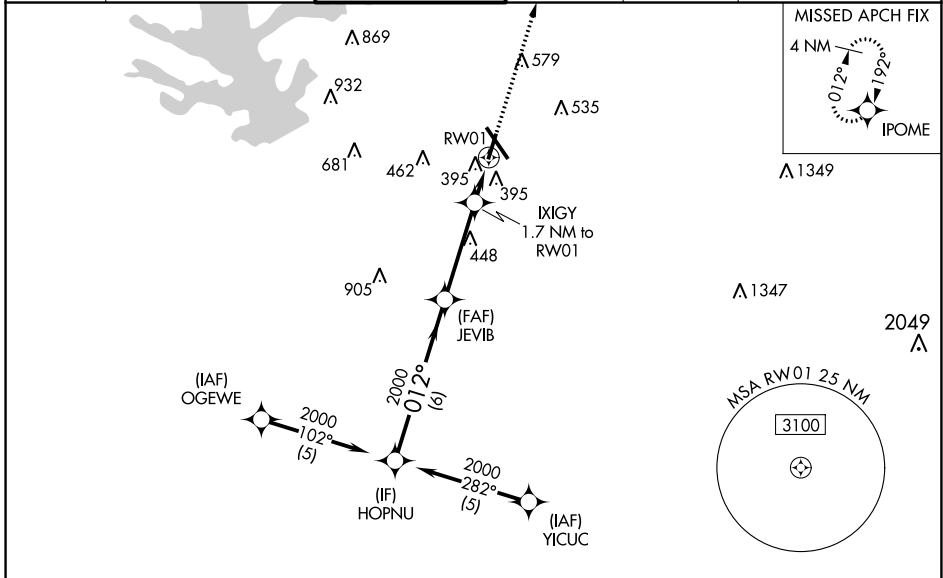
RNAV (GPS) RWY 1

CONROE/NORTH HOUSTON RGNL (C̄X̄O)

▽ **⚠** For uncompensated Baro-VNAV systems, LNAV/VNAV NA below -15°C (5°F) or above 48°C (118°F). DME/DME RNP-0.3 NA. Rwy 1 helicopter visibility reduction below ¾ SM NA.

MISSED APPROACH: Climb to 2000 direct IPOME and hold.

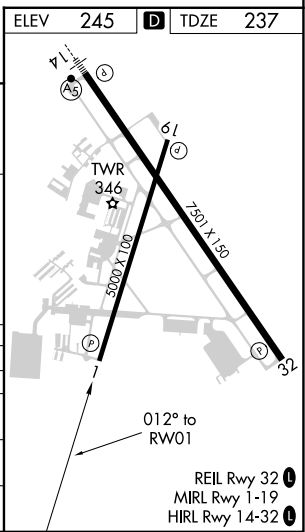
ATIS 118.325	HOUSTON APP CON 119.7 281.4	CONROE TOWER ★ 124.125 (CTAF) 0	GND CON 120.45	CLNC DEL 120.45	CLNC DEL 119.55 (When twr closed)
------------------------	---------------------------------------	---	--------------------------	---------------------------	--



SC-5, 31 OCT 2024 to 28 NOV 2024

SC-5, 31 OCT 2024 to 28 NOV 2024

ELEV	245	TDZE	237
GP 3.00° TCH 49	*LNAV only.		
CATEGORY	A	B	C
LPV DA	521-1		284 (300-1)
LNAV/VNAV DA	651-1½		414 (500-1½)
LNAV MDA	660-1 423 (500-1)		660-1¼ 423 (500-1¼)
CIRCLING	700-1 455 (500-1)		880-1¾ 635 (700-1¾) 960-2¼ 715 (800-2¼)



REIL Rwy 32
MIRL Rwy 1-19
HIRL Rwy 14-32