

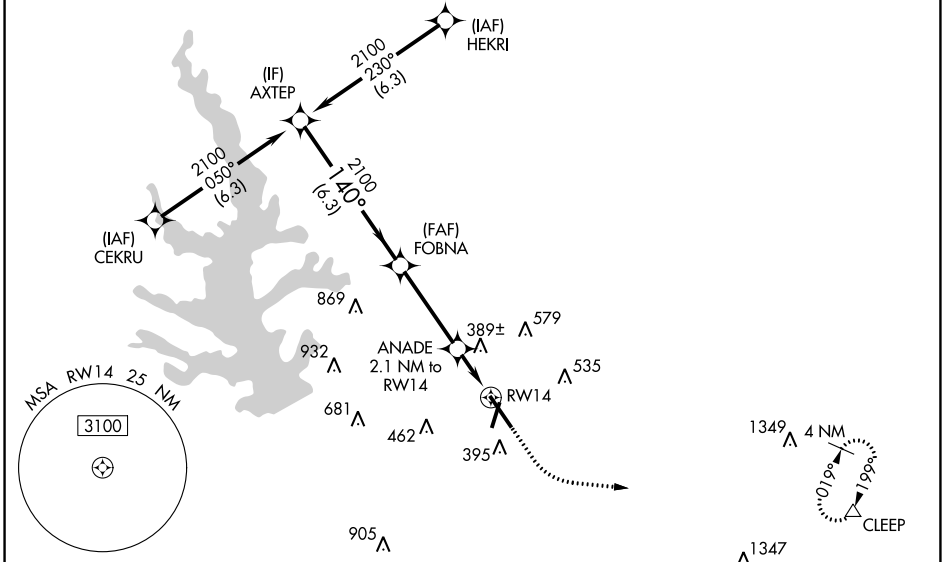
WAAS CH 99512 W14A	APP CRS 140°	Rwy Idg TDZE Apt Elev	7501 236 245
--	------------------------	-----------------------------	---

RNAV (GPS) RWY 14

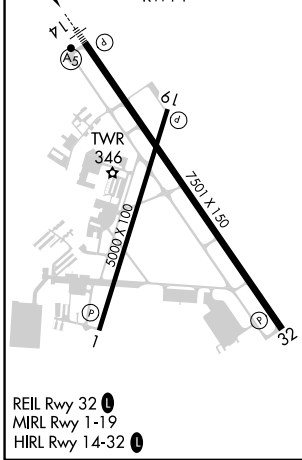
CONROE/NORTH HOUSTON RGNL (C'XO)

<p>For uncompensated Baro-VNAV systems, LNAV/VNAV NA below -6°C (-22°F) or above 54°C (130°F). DME/DME RNP-0.3 NA.</p>		<p>MISSED APPROACH: Climb to 700 then climbing left turn to 3100 direct CLEEP and hold.</p>

ATIS 118.325	HOUSTON APP CON 119.7 281.4	CONROE TOWER ★ 124.125 (CTAF)	GND CON 120.45	CLNC DEL 120.45	CLNC DEL 119.55 (When twr closed)
------------------------	---------------------------------------	---	--------------------------	---------------------------	--



ELEV 245	D TDZE 236
-----------------	--------------------------



	AXTEP	FOBNA	ANADE	
	2100	2100	2.1 NM to RWY 14	
	140°		*1.1 NM to RWY 14	
	2100		*940	
	6.3 NM		3.6 NM	1 NM 1.1 NM
GP 3.00° TCH 47				
CATEGORY	A	B	C	D
LPV DA	436-½		200 (200-½)	
LNAV/VNAV DA	521-½		285 (300-½)	
LNAV MDA	640-½		640-⅝ 404 (400-⅝)	
C CIRCLING	700-1 455 (500-1)		880-1¾ 635 (700-1¾) 960-2¼ 715 (800-2¼)	

SC-5, 31 OCT 2024 to 28 NOV 2024

SC-5, 31 OCT 2024 to 28 NOV 2024