

RNAV (GPS) RWY 34

BEND MUNI (BDN)

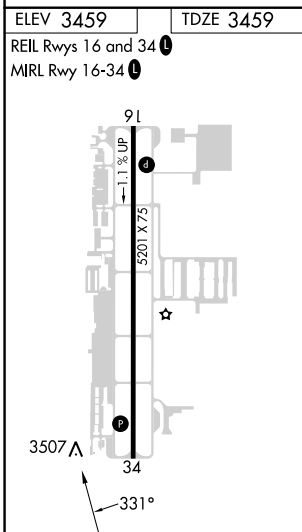
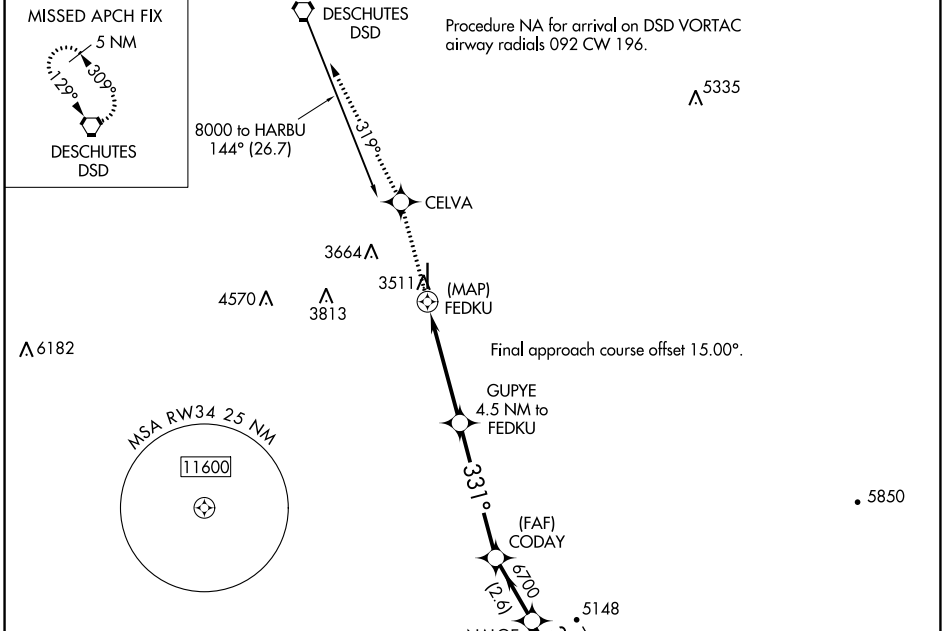
APP CRS 331°	Rwy Idg TDZE Apt Elev	5201 3459 3459
------------------------	-----------------------------	---

RNP APCH - GPS.

⚠ Rwy 34 helicopter visibility reduction below 3/4 SM NA. When local altimeter setting not received, use Redmond altimeter setting and increase all MDAs 100 feet and LNAV visibility Cats B, C, and D 1/2 SM and Circling visibility Cats A, B, and C 1/2 SM.

MISSED APPROACH: Climb to 6000 direct CELVA and on track 319° to DSD VORTAC and hold.

AWOS-3 134.425	SEATTLE CENTER 126.15 269.475	UNICOM 123.0 (CTAF) 0
--------------------------	---	---------------------------------



6000 CELVA tr 319° DSD VGSJ and descent angles not coincident (VGSJ Angle 3.00/TCH 44).

GUPYE 4.5 NM to FEDKU

1.6 NM to FEDKU

FEDKU

331°

5100

316°

6700

7400

316°

17500 8000

136°

316°

7 NM Holding Pattern

NALOE

CODAY

HARBU

0.5	1.6	2.9 NM	5 NM	2.6 NM	3.4 NM
CATEGORY	A	B	C	D	
LNAV MDA	4180-1	721 (800-1)	4180-2	721 (800-2)	
CIRCLING	4180-1	721 (800-1)	4180-2	4640-3	1181 (1200-3)

NW-1, 31 OCT 2024 to 28 NOV 2024

NW-1, 31 OCT 2024 to 28 NOV 2024