

24305

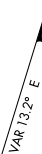
AIRPORT DIAGRAM

REID-HILLVIEW OF SANTA CLARA COUNTY (R.H.V)
AL-5591 (FAA)
SAN JOSE, CALIFORNIA

ATIS
125.2
REID-HILLVIEW TOWER ★
119.8 (CTAF) (RWY 13L-31R)
126.1 (RWY 13R-31L)
GND CON
121.65

FIELD
ELEV
135

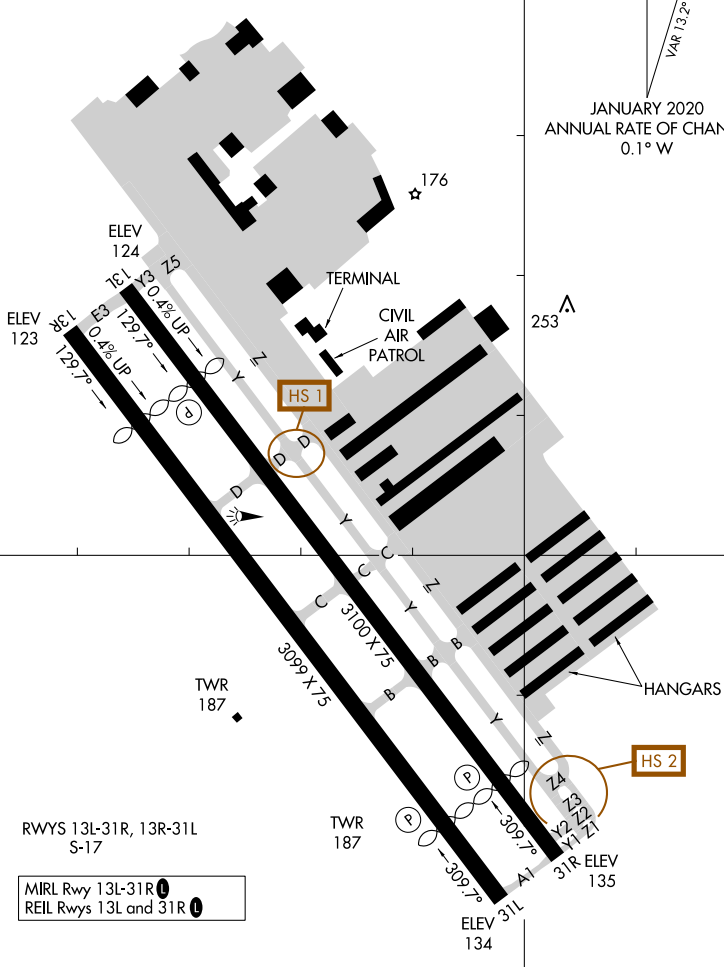
37°20.5'N



JANUARY 2020
ANNUAL RATE OF CHANGE
0.1° W

SW-2, 31 OCT 2024 to 28 NOV 2024

SW-2, 31 OCT 2024 to 28 NOV 2024



37°20.0'N

RWYS 13L-31R, 13R-31L
S-17

MIRL Rwy 13L-31R
REIL Rws 13L and 31R

CAUTION: BE ALERT TO RUNWAY CROSSING CLEARANCES.
READBACK OF ALL RUNWAY HOLDING INSTRUCTIONS IS REQUIRED.

121°49.5'W

121°49.0'W

AIRPORT DIAGRAM

24305

SAN JOSE, CALIFORNIA
REID-HILLVIEW OF SANTA CLARA COUNTY (R.H.V)