

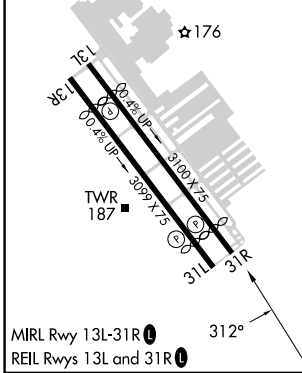
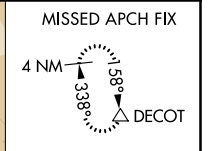
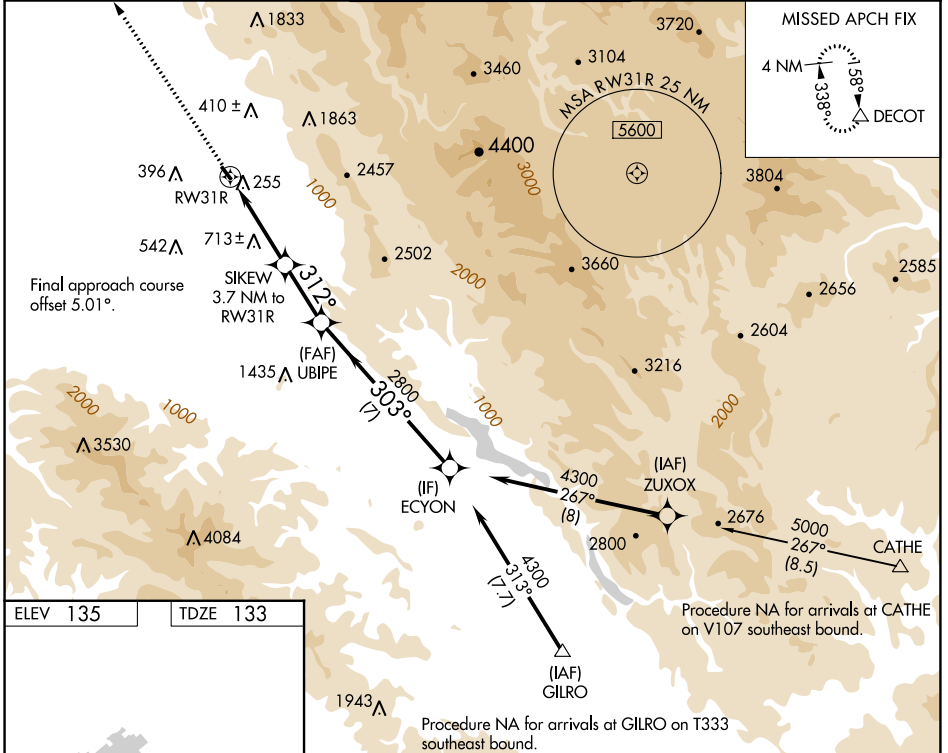
APP CRS	Rwy Idg	2690
312°	TDZE	133
	Apt Elev	135

RNAV (GPS) Y RWY 31R

REID-HILLVIEW OF SANTA CLARA COUNTY (R.H.V)

RNP APCH.		MISSED APPROACH: Climb to 4000 direct DECOT and hold.
▽ NA Circling Rwy 31L NA at night. Rwy 31R helicopter visibility reduction below 3/4 SM NA. VDP NA when using Norman Y Mineta San Jose Intl altimeter setting. Circling east of Rwy 13L-31R NA at night. When control tower closed, use Norman Y Mineta San Jose Intl altimeter setting and increase all MDAs 40 feet.		

ATIS	NORCAL APP CON	REID-HILLVIEW TOWER * (Rwy 13L-31R) (Rwy 13R-31L)	GND CON	UNICOM
125.2	120.1 290.25	119.8 (CTAF) 0 126.1	121.65	122.95



4000	DECOT	ECYON		
↑	△			
RWY 31R → 2.6 NM → SIKEW 3.7 NM to RWY 31R → 1.1 NM → UBIPE → 2.5 NM → ECYON → 7 NM → 4300				
RWY 31R → 1760 → 312° → 2800 → 303° → 4300				
RWY 31R → 2.6 NM → 1.1 NM → 2.5 NM → 7 NM				
CATEGORY	A	B	C	D
LNAV MDA	1300-1¼ 1167 (1200-1¼)	1300-1½ 1167 (1200-1½)	NA	
CIRCLING	1300-1¼ 1165 (1200-1¼)	1300-1½ 1165 (1200-1½)	NA	

SW-2, 31 OCT 2024 to 28 NOV 2024

SW-2, 31 OCT 2024 to 28 NOV 2024