

WAAS CH 90528 W24A	APP CRS 242°	Rwy Idg TDZE Apt Elev	4000 785 786
--	------------------------	-----------------------------	---

RNAV (GPS) RWY 24

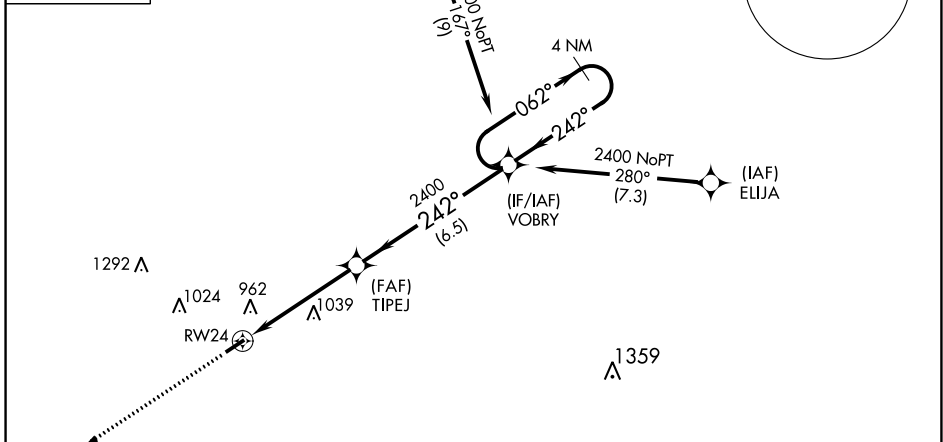
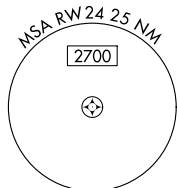
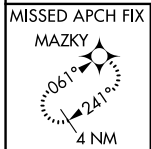
SENECA COUNTY(16G)

RNP APCH.

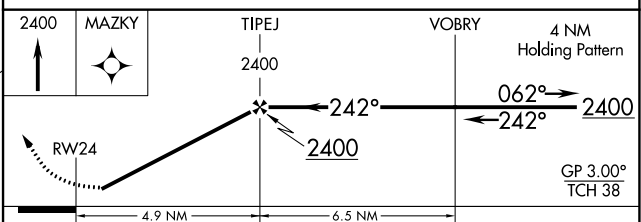
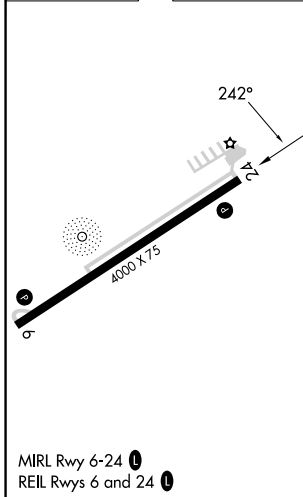
NA Circling to Rwy 24 NA at night. Baro-VNAV NA when using Findlay altimeter setting. Rwy 24 helicopter visibility reduction below $\frac{3}{4}$ SM NA. For uncompensated Baro-VNAV systems, LNAV/VNAV NA below -16°C or above 54°C. When local altimeter setting not received, use Findlay altimeter setting and increase all DA/MDA 60 feet, and increase LPV, LNAV/VNAV all Cats visibility $\frac{1}{8}$ SM, increase LNAV and Circling Cat C visibility $\frac{1}{4}$ mile.

MISSED APPROACH: Climb to 2400 direct MAZKY and hold.

AWOS-3 127.175	FDY ASOS 132.85	TOLEDO APP CON 120.8 317.55	UNICOM 123.0 (CTAF) 0
--------------------------	---------------------------	---------------------------------------	--



ELEV	786	TDZE	785
------	------------	------	------------



CATEGORY	A	B	C	D
LPV DA		1058-1	273 (300-1)	NA
LNAV/VNAV DA		1063-1	278 (300-1)	NA
LNAV MDA	1280-1	495 (500-1)	1280-1 $\frac{3}{8}$ 495 (500-1 $\frac{3}{8}$)	NA
CIRCLING	1280-1	494 (500-1)	1340-1 $\frac{1}{2}$ 554 (600-1 $\frac{1}{2}$)	NA

EC-2, 31 OCT 2024 to 28 NOV 2024

EC-2, 31 OCT 2024 to 28 NOV 2024