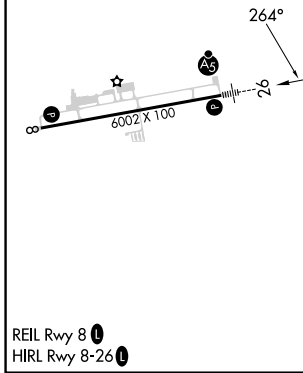
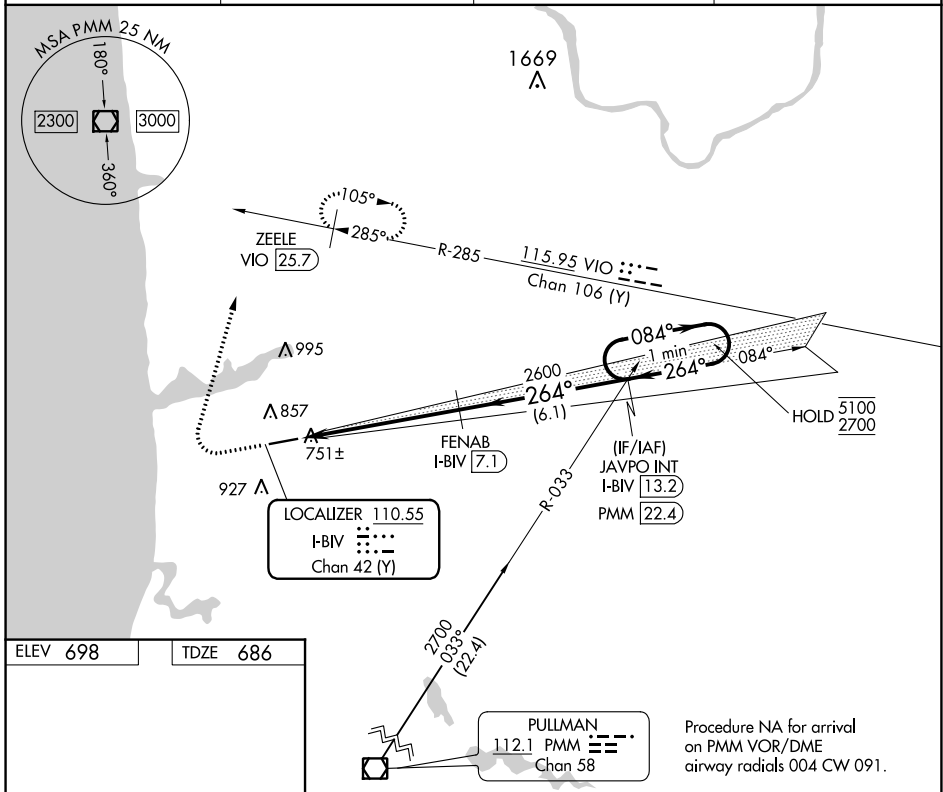


LOC/DME I-BIV 110.55 Chan 42 (Y)	APP CRS 264°	Rwy Idg TDZE Apt Elev	6002 686 698
--	------------------------	-----------------------------	---

ILS or LOC RWY 26

WEST MICHIGAN RGNL (BIV)

DME required.		MALSR	MISSED APPROACH: Climb to 1500 then climbing right turn to 2600 on heading 020° and VIO VOR/DME R-285 to ZEELE/VIO 25.7 DME and hold.
ASOS 119.025	GREAT LAKES APP CON* 133.825 290.35	CLNC DEL 123.95	UNICOM 123.05 (CTAF)



ELEV 698	TDZE 686	<p>Procedure NA for arrival on PMM VOR/DME airway radials 004 CW 091.</p>			
1500	2600	ZEELE VIO R-285 VIO 25.7	FENAB I-BIV 7.1	JAVPO INT I-BIV 13.2	One Minute Holding Pattern
*LOC only		*I-BIV 2.1	2600	2600	5100 / 2700
0.9 NM		5 NM	6.1 NM	GS 3.00° TCH 32	
CATEGORY	A	B	C	D	
S-ILS 26	886-½ 200 (200-½)		NA		
S-LOC 26	1020-½ 334 (400-½)		NA		
CIRCLING	1200-1 502 (600-1)	1240-1 542 (600-1)	1240-1½ 542 (600-1½)	NA	

EC-1, 31 OCT 2024 to 28 NOV 2024

EC-1, 31 OCT 2024 to 28 NOV 2024