

VORTAC OCN 115.3 Chan 100	APP CRS 096°	Rwy Idg TDZE Apt Elev N/A N/A 28
---	------------------------	--

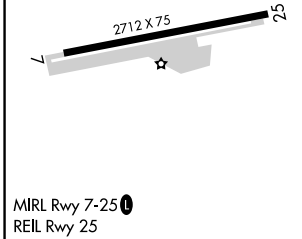
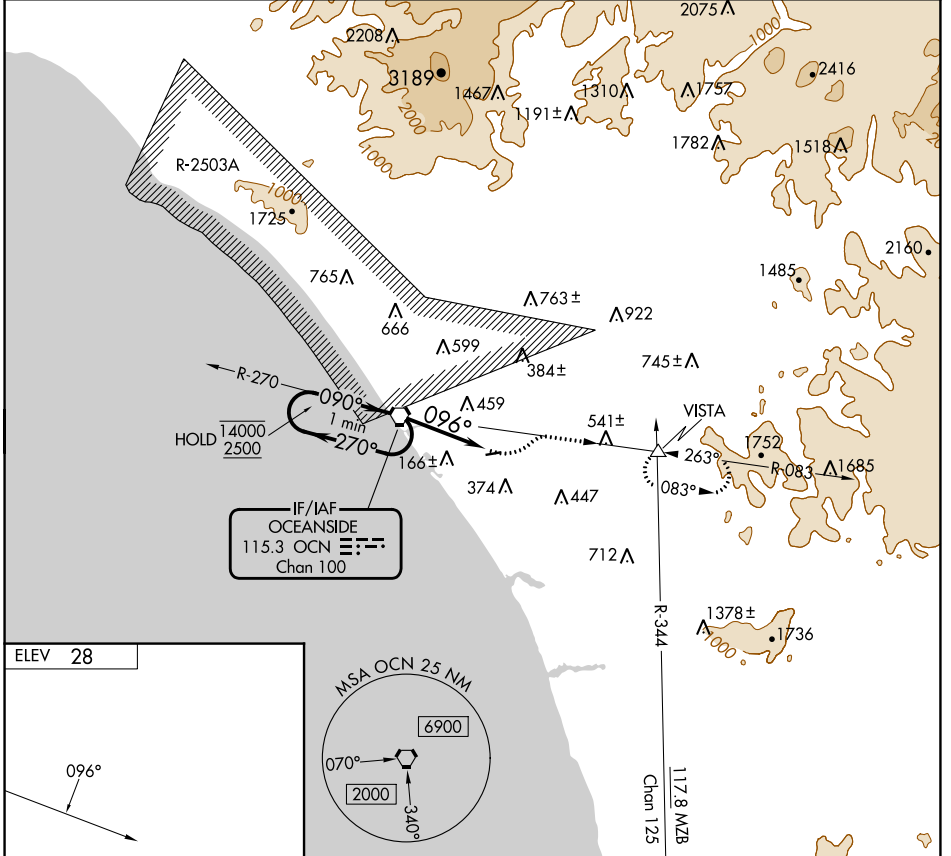
VOR-A

BOB MAXWELL MEML AIRFIELD (OKB)

⚠ Rwy 7 helicopter visibility reduction below 1 SM NA. Circling Rwy 7 NA at night. When local altimeter setting not received, use CRQ altimeter setting and increase all MDAs 60 feet.

⚠ MISSED APPROACH: Climbing left turn to 5600 on heading 030° and on OCN VORTAC R-083 to VISTA INT and hold, continue climb-in-hold to 5600.

ASOS 127.8	SOCAL APP CON 127.3 323.0	UNICOM 122.725 (CTAF) 📞
----------------------	-------------------------------------	--



ELEV 28	OCN VORTAC	5600 hdg 030°	OCN R-083	VISTA △													
MIRL Rwy 7-25 📞 REIL Rwy 25	One Minute Holding Pattern																
FAF to MAP 3.4 NM	3.4 NM																
<table border="1"> <tr> <td>Knots</td> <td>60</td> <td>90</td> <td>120</td> <td>150</td> <td>180</td> </tr> <tr> <td>Min:Sec</td> <td>3:24</td> <td>2:16</td> <td>1:42</td> <td>1:21</td> <td>1:08</td> </tr> </table>	Knots	60	90	120	150	180	Min:Sec	3:24	2:16	1:42	1:21	1:08	CATEGORY	A	B	C	D
Knots	60	90	120	150	180												
Min:Sec	3:24	2:16	1:42	1:21	1:08												
CIRCLING	980-1¼ 952 (1000-1¼)	980-1½ 952 (1000-1½)	NA														

OCEANSIDE, CALIFORNIA					33°13'N-117°21'W					BOB MAXWELL MEML AIRFIELD (OKB)				
Amdt 4 05SEP24										VOR-A				

SW-3, 31 OCT 2024 to 28 NOV 2024

SW-3, 31 OCT 2024 to 28 NOV 2024