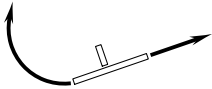
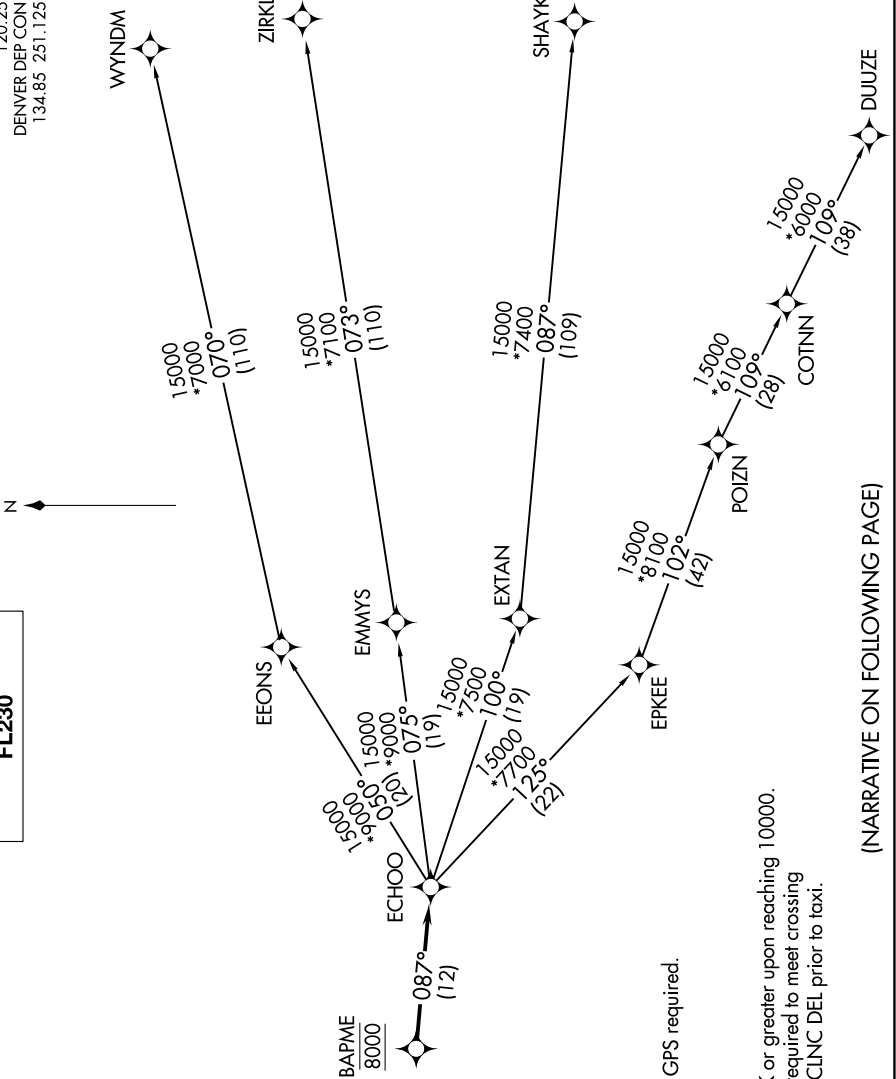


# ECHOO ONE DEPARTURE (RNAV)

SW-1, 31 OCT 2024 to 28 NOV 2024

**TOP ALTITUDE:  
FL230**

CINC DEL  
120.25  
DENVER DEP CON  
134.85 251.125



TAKEOFF MINIMUMS

Rwys 6, 24: NA.

Rwys 15, 33: Standard.

NOTE: DME/DME/IRU or GPS required.

NOTE: RNAV 1.

NOTE: Turbojets only.

NOTE: RADAR required.

NOTE: Accelerate to 250K or greater upon reaching 10000.

If slower speed is required to meet crossing restrictions advise CINC DEL prior to taxi.

NOTE: Chart not to scale.

(NARRATIVE ON FOLLOWING PAGE)

SW-1, 31 OCT 2024 to 28 NOV 2024

# ECHOO ONE DEPARTURE (RNAV)