

SKYEE ONE DEPARTURE (RNAV)

CLNC DEL
120.25
DENVER DEP CON
134.85 251.125

**TOP ALTITUDE:
FL230**

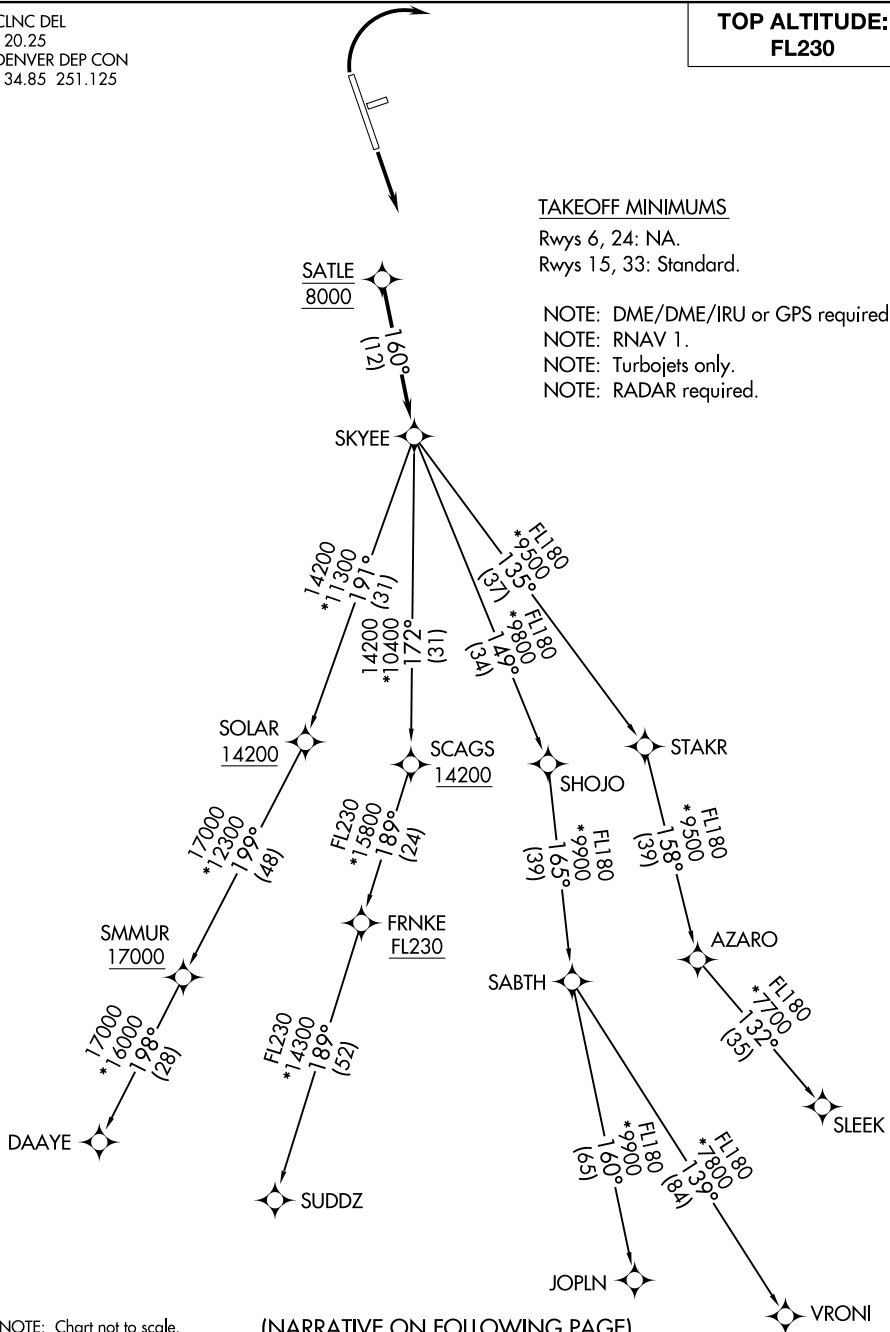
TAKEOFF MINIMUMS

Rwys 6, 24: NA.
Rwys 15, 33: Standard.

NOTE: DME/DME/IRU or GPS required.
NOTE: RNAV 1.
NOTE: Turbojets only.
NOTE: RADAR required.

SW-1, 31 OCT 2024 to 28 NOV 2024

SW-1, 31 OCT 2024 to 28 NOV 2024



NOTE: Chart not to scale.

(NARRATIVE ON FOLLOWING PAGE)

SKYEE ONE DEPARTURE (RNAV)