

APP CRS	Rwy Idg	<b>6000</b>
<b>055°</b>	TDZE	<b>670</b>
	Apt Elev	<b>681</b>

# RNAV (GPS) RWY 6

MAURY COUNTY RGNL (MRC)

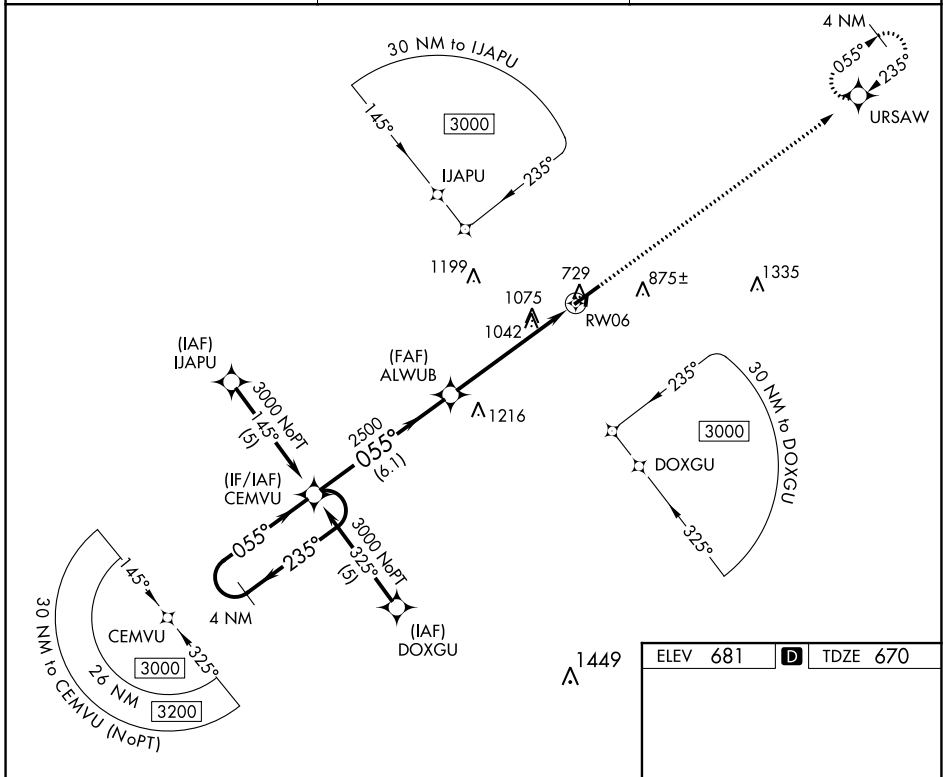
**▼** DME/DME RNP-0.3 NA. Visibility reduction by helicopters NA. When local altimeter setting not received, use Nashville Intl altimeter setting; increase all MDA 120 feet and increase LNAV Cat B visibility ¼ SM, Cats C and D visibility ½ SM, increase Circling Cat C visibility ½ SM.

**MISSED APPROACH:**  
Climb to 3000 direct URSAW and hold.

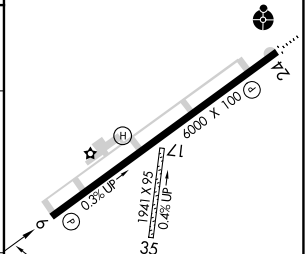
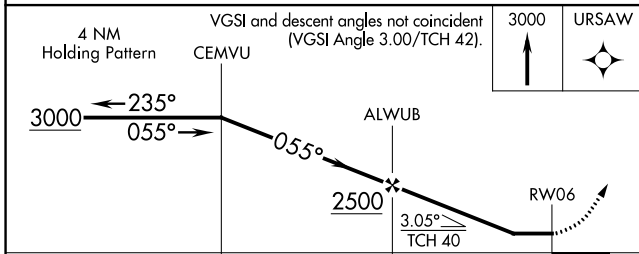
AWOS-3  
**128.625**

MEMPHIS CENTER  
**125.85 379.25**

UNICOM  
**122.8 (CTAF) 0**



ELEV	681	<b>D</b>	TDZE	670
------	-----	----------	------	-----



CATEGORY	A	B	C	D
LNAV MDA	1340-1	670 (700-1)	1340-1¾ 670 (700-1¾)	1340-2 670 (700-2)
CIRCLING	1340-1 659 (700-1)	1360-1 679 (700-1)	1380-2 699 (700-2)	1620-3 939 (1000-3)

MIRL Rwy 6-24  
REIL Rwy 6  
REIL Rwy 24 **0**

SE-1, 31 OCT 2024 to 28 NOV 2024

SE-1, 31 OCT 2024 to 28 NOV 2024