

VOR/DME GCC 114.6 Chan 93	APP CRS 161°	Rwy Idg TDZE Apt Elev	7500 4337 4365
---	------------------------	-----------------------------	---

VOR RWY 16

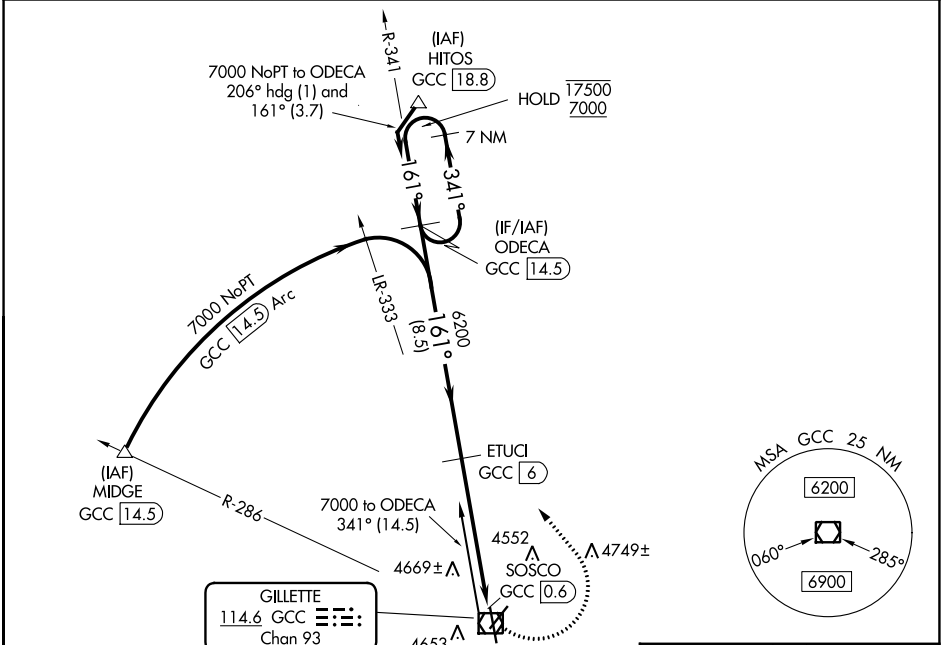
NORTHEAST WYOMING RGNL (GCC)

DME required.

▼ Circling Rwy 3 NA at night. Rwy 16 helicopter visibility reduction below 3/4 SM NA.

▲ MISSED APPROACH: Climbing left turn to 7000 on heading 311° and GCC R-341 to ODECA/14.5 DME and hold.

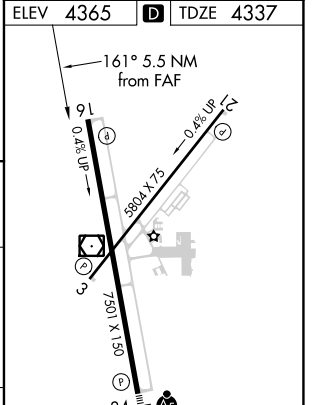
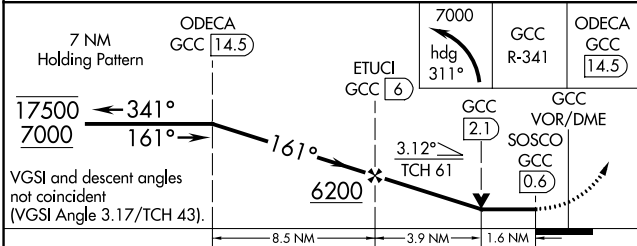
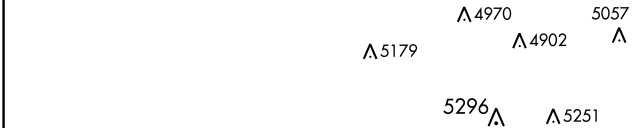
ASOS 124.175	DENVER CENTER 135.6 363.025	UNICOM 122.95	CTAF 118.5 ①
------------------------	---------------------------------------	-------------------------	-------------------------------



NW-1, 31 OCT 2024 to 28 NOV 2024

NW-1, 31 OCT 2024 to 28 NOV 2024

ELEV 4365	D TDZE 4337
-----------	--------------------



CATEGORY	A	B	C	D
S-16	4920-1	583 (600-1)	4920-1 3/4	583 (600-1 3/4)
C CIRCLING	5040-1 675 (700-1)	5240-1 1/4 875 (900-1 1/4)	5400-3	1035 (1100-3)

HIRL Rwy 16-34 **①**
 REIL Rws 3, 16, and 21
 MIRL Rwy 3-21 **①**