

NDB UMB	APP CRS	Rwy Idg	5424
380	276°	TDZE	379
		Apt Elev	385

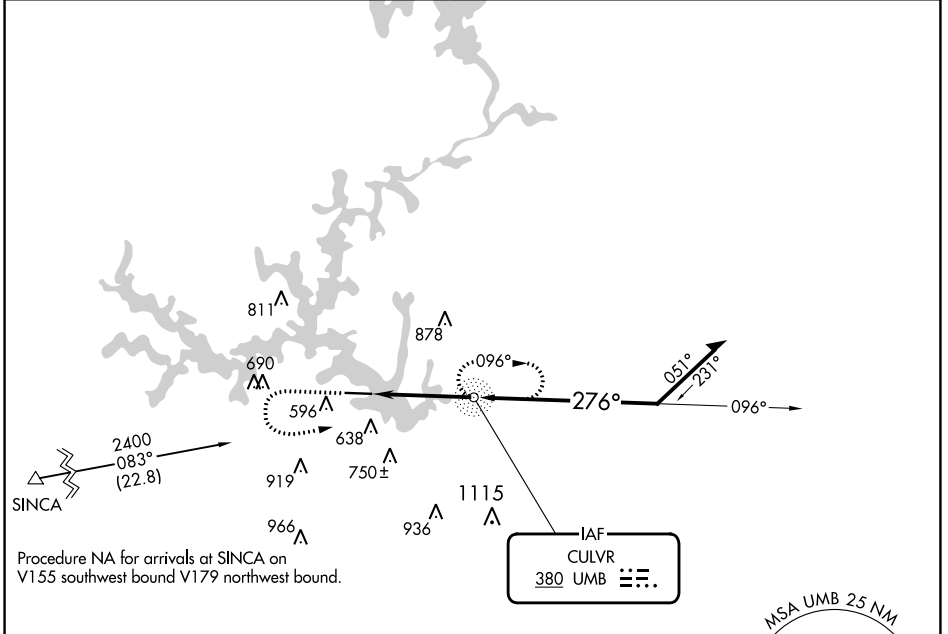
NDB RWY 28

BALDWIN COUNTY RGNL (MLJ)

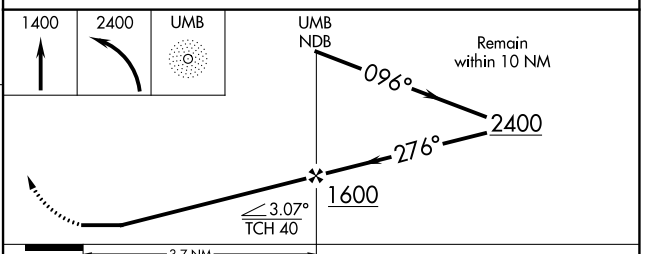
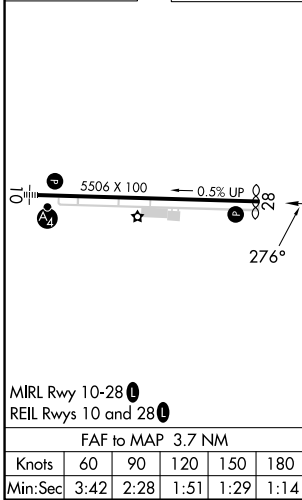
⚠ Rwy 28 helicopter visibility reduction below 3/4 SM NA.

⚠ MISSED APPROACH: Climb to 1400 then climbing left turn to 2400 direct UMB NDB and hold, continue climb-in-hold to 2400.

AWOS-3 120.925	ATLANTA APP CON ★ 124.2 279.6	UNICOM 122.975 (CTAF) 0
--------------------------	---	-----------------------------------



ELEV 385	TDZE 379
----------	----------



CATEGORY	A	B	C	D
S-28	940-1	561 (600-1)	940-1½	561 (600-1½)
C CIRCLING	940-1	555 (600-1)	1080-2 695 (700-2)	1280-3 895 (900-3)

SE-4, 31 OCT 2024 to 28 NOV 2024

SE-4, 31 OCT 2024 to 28 NOV 2024