

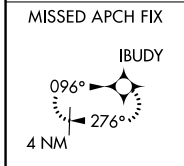
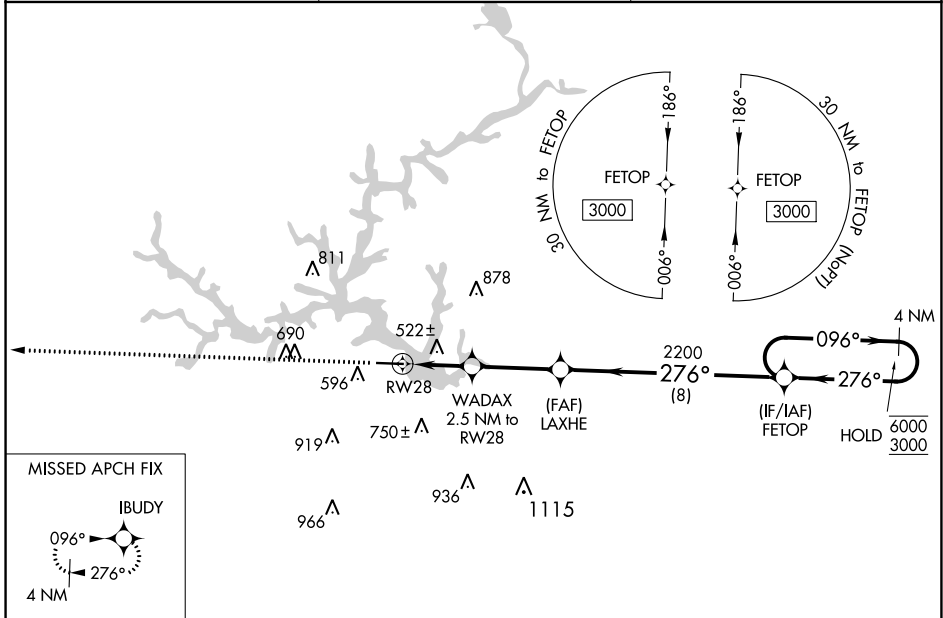
WAAS CH 82318	APP CRS 276°	Rwy Idg TDZE Apt Elev	5424 379 385
-------------------------	------------------------	-----------------------------	---

RNAV (GPS) RWY 28

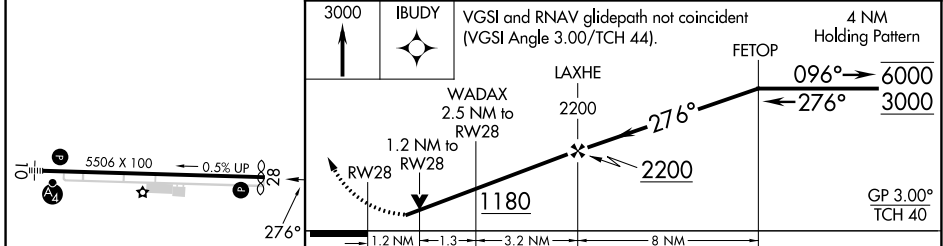
BALDWIN COUNTY RGNL (MLJ)

RNP APCH-GPS.		MISSED APPROACH: Climb to 3000 direct IBUDY and hold.
<p>▼ ▲ Rwy 28 helicopter visibility reduction below 3/4 SM NA. For uncompensated Baro-VNAV systems, LNAV/VNAV NA below -15°C or above 54°C.</p>		

AWOS-3 120.925	ATLANTA APP CON ★ 124.2 279.6	UNICOM 122.975 (CTAF) 0
--------------------------	---	-----------------------------------



ELEV 385	TDZE 379
----------	----------



CATEGORY	A	B	C	D
LPV DA	680-1 301 (300-1)			
LNAV/VNAV DA	830-1 3/8 451 (500-1 3/8)			
LNAV MDA	780-1 401 (400-1)	780-1 1/8 401 (400-1 1/8)		
CIRCLING	900-1 515 (600-1)	940-1 555 (600-1)	1080-2 695 (700-2)	1280-3 895 (900-3)

MIRL Rwy 10-28
REIL Rwy 10 and 28

SE-4, 31 OCT 2024 to 28 NOV 2024

SE-4, 31 OCT 2024 to 28 NOV 2024