

WAAS CH <b>65901</b> <b>W04A</b>	APP CRS <b>037°</b>	Rwy Idg TDZE <b>863</b> Apt Elev <b>869</b>	<b>6497</b>
----------------------------------------	------------------------	---------------------------------------------------	-------------

# RNAV (GPS) RWY 4

LEE C FINE MEML (AIZ)

RNP APCH.

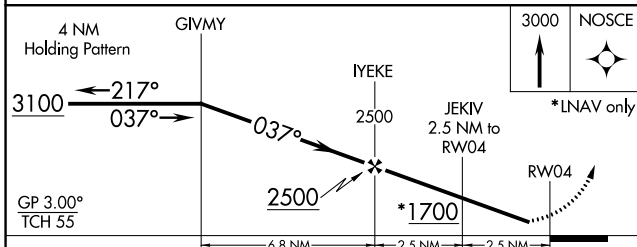
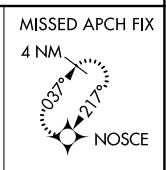
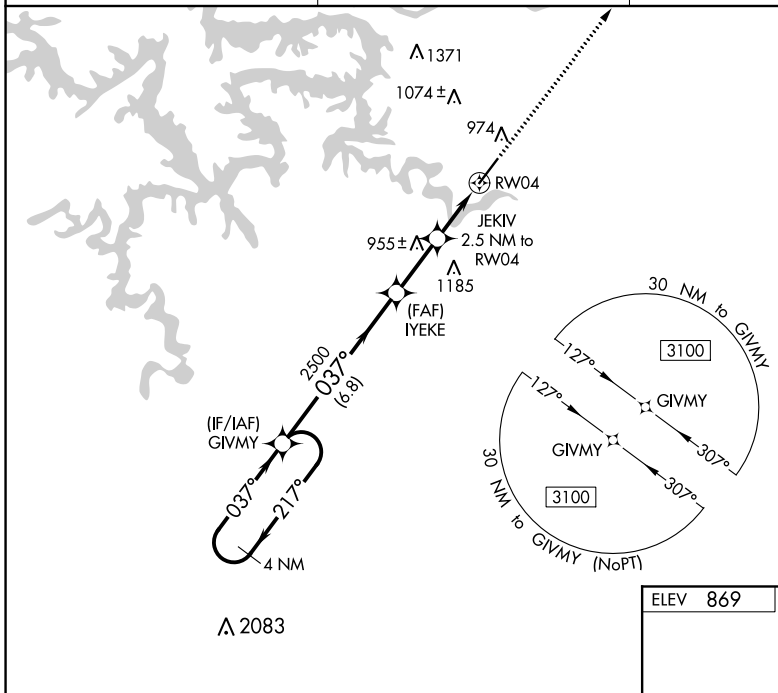
⚠ For uncompensated Baro-VNAV systems, LNAV/VNAV NA below -16°C or above 54°C. Procedure NA at night. Rwy 4 helicopter visibility reduction below 1 SM NA. When local altimeter setting not received, use Camdenton altimeter setting and increase all DA 50 feet, all MDA 60 feet, and LNAV Cat C visibility 1/8 mile. Baro-VNAV NA when using Camdenton altimeter setting.

MISSED APPROACH: Climb to 3000 direct NOSCE and hold.

AWOS-3PT  
**135.325**

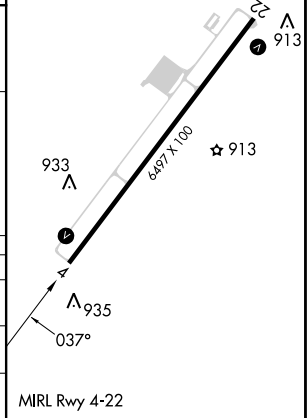
MIZZU APP CON  
**124.1 353.925**

UNICOM  
**122.8 (CTAF) 0**



ELEV 869	TDZE 863
----------	----------

CATEGORY	A	B	C	D
LPV DA	1127-1	264 (300-1)		NA
LNAV/VNAV DA	1113-1	250 (300-1)		NA
LNAV MDA	1220-1	357 (400-1)		NA



NC-3, 31 OCT 2024 to 28 NOV 2024

NC-3, 31 OCT 2024 to 28 NOV 2024