

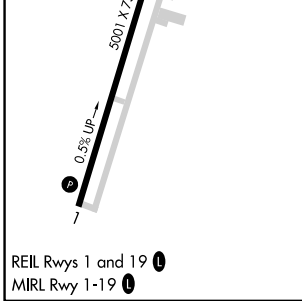
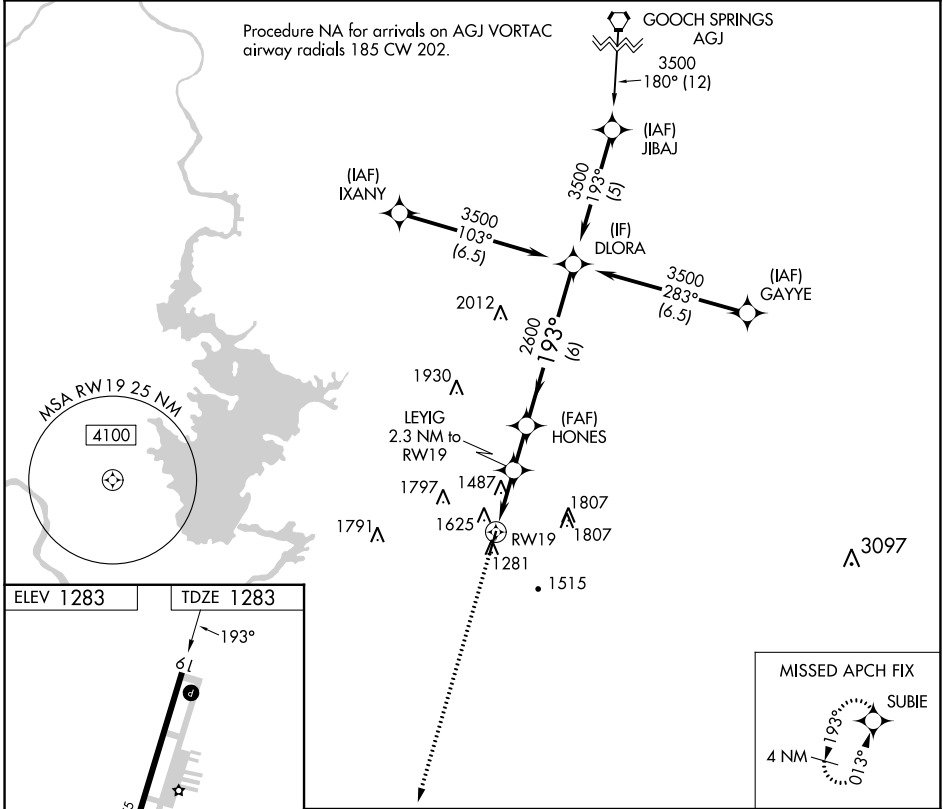
APP CRS <b>193°</b>	Rwy Idg TDZE Apt Elev	<b>5001</b> <b>1283</b> <b>1283</b>
------------------------	-----------------------------	---

# RNAV (GPS) RWY 19

BURNET MUNI/KATE CRADDOCK FLD (BMQ)

RNP APCH - GPS.		MISSED APPROACH: Climb to 3500 direct SUBIE and hold.
<p><b>▼</b> Rwy 19 helicopter visibility reduction below 3/4 SM NA. When local altimeter setting not received, use RYW altimeter setting and increase all MDAs 60 feet and LNAV Cat C visibility 1/8 SM.</p> <p><b>▲</b></p>		

ASOS <b>119.925</b>	HOUSTON CENTER <b>132.35 317.5</b>	UNICOM <b>122.8 (CTAF) 0</b>
------------------------	---------------------------------------	---------------------------------



3500	SUBIE	DLORA			
<p>↑</p>		<p>HONES</p> <p>LEYIG 2.3 NM to RWY19 <math>\leq 3.03^\circ</math> TCH 45</p> <p>RWY19</p> <p>2060</p> <p>2600</p> <p>193°</p> <p>3500</p> <p>2.3 NM</p> <p>1.7 NM</p> <p>6 NM</p>			
CATEGORY	A	B	C	D	
LNAV MDA	1940-1	657 (700-1)	1940-1 7/8 657 (700-1 7/8)	NA	

BURNET, TEXAS  
Amdt 1 31OCT24

BURNET MUNI/KATE CRADDOCK FLD (BMQ)  
30°44'N-98°14'W  
**RNAV (GPS) RWY 19**

SC-3, 31 OCT 2024 to 28 NOV 2024

SC-3, 31 OCT 2024 to 28 NOV 2024